

# Village Suite 15

Floor 2 | 43.07m<sup>2</sup> – 463.60ft<sup>2</sup>

## Kitchen

2300mm x 2130mm  
7'7" x 7'

## Sitting Room

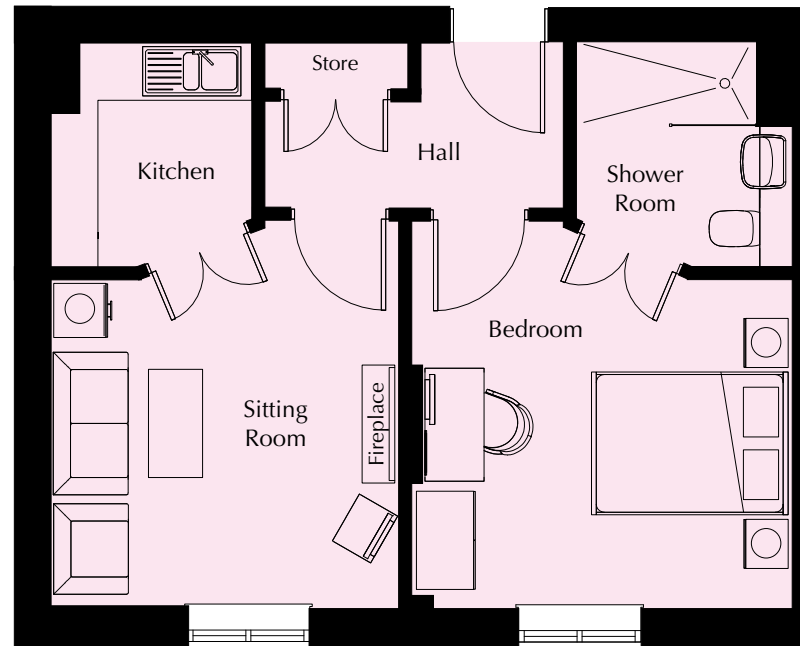
3941mm x 3627mm  
12'11" x 11'11"

## Bedroom

3941mm x 3856mm  
12'11" x 12'8"

## Shower Room

2300mm x 2180mm  
7'7" x 7'2"



These particulars are intended to give a fair and substantially correct overall description.

Measurements have been taken at 1500mm ceiling height.

All dimensions are approximate. Room measurements include bay windows if applicable.

Furniture layout is to give an indicative impression and although all efforts have been made to ensure its accuracy at time of print; fixtures, fittings, finishes and specifications are subject to change without notice.

