

49 Tuckers Court

Ground Floor | 89.62m² – 964.7ft²

Kitchen

3648mm x 3000mm

12' x 9'10"

Living Room

6001mm x 4680mm

19'8" x 15'4"

Bedroom 1

4440mm x 3390mm

14'7" x 11'1"

Shower Room

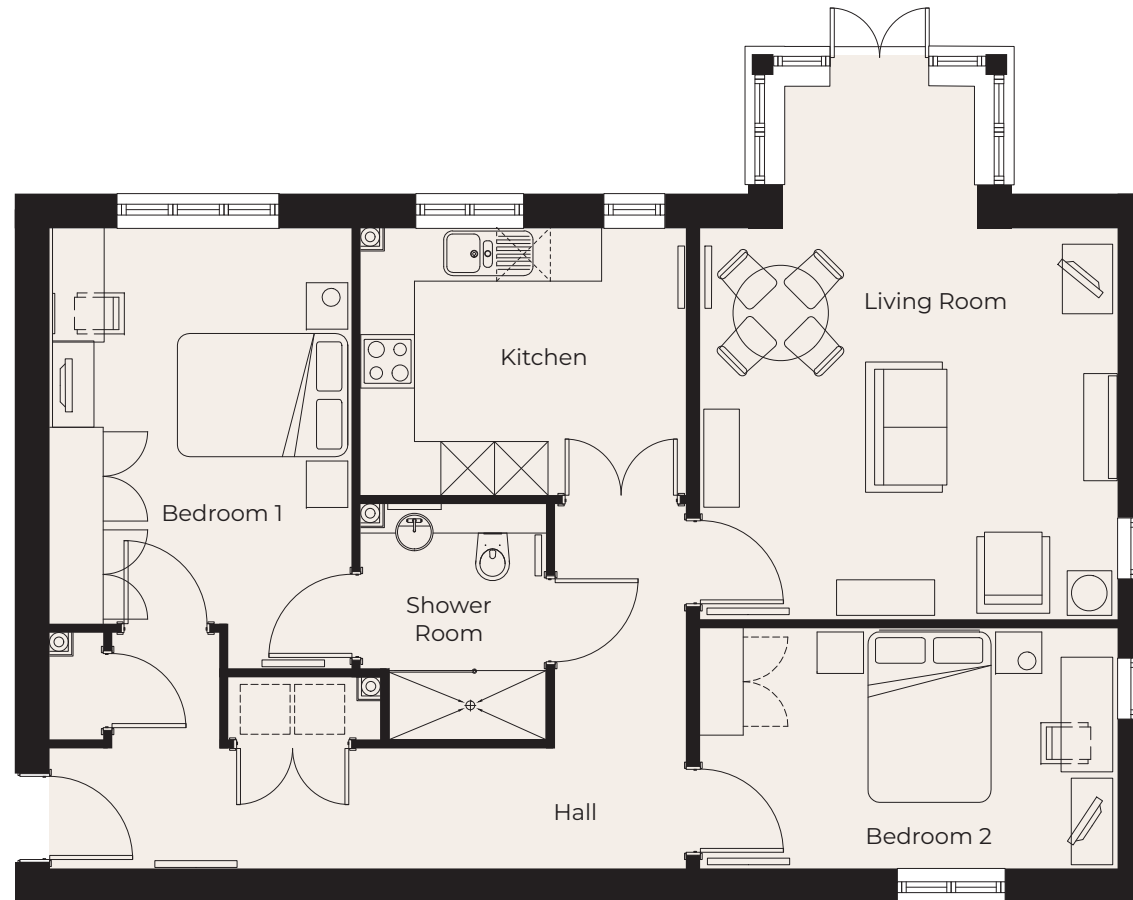
2640mm x 2078mm

8'8" x 6'10"

Bedroom 2

4680mm x 2700mm

15'4" x 8'10"



These particulars are intended to give a fair and substantially correct overall description.

Measurements have been taken at 1500mm skelling height.

All dimensions are approximate. Bedroom measurements include the wardrobe if applicable. Room measurements include bay windows if applicable.

Furniture layout is to give an indicative impression. Although all efforts have been made to ensure its accuracy at time of print dimensions, fixtures, fittings, finishes and specifications are subject to change without notice.

The properties are sold unfurnished.

