

# Village Suite

# 36

Second Floor | 61.3m<sup>2</sup> – 659ft<sup>2</sup>\*

## Kitchenette

2300mm x 2180mm  
7'6" x 7'2"

## Sitting Room

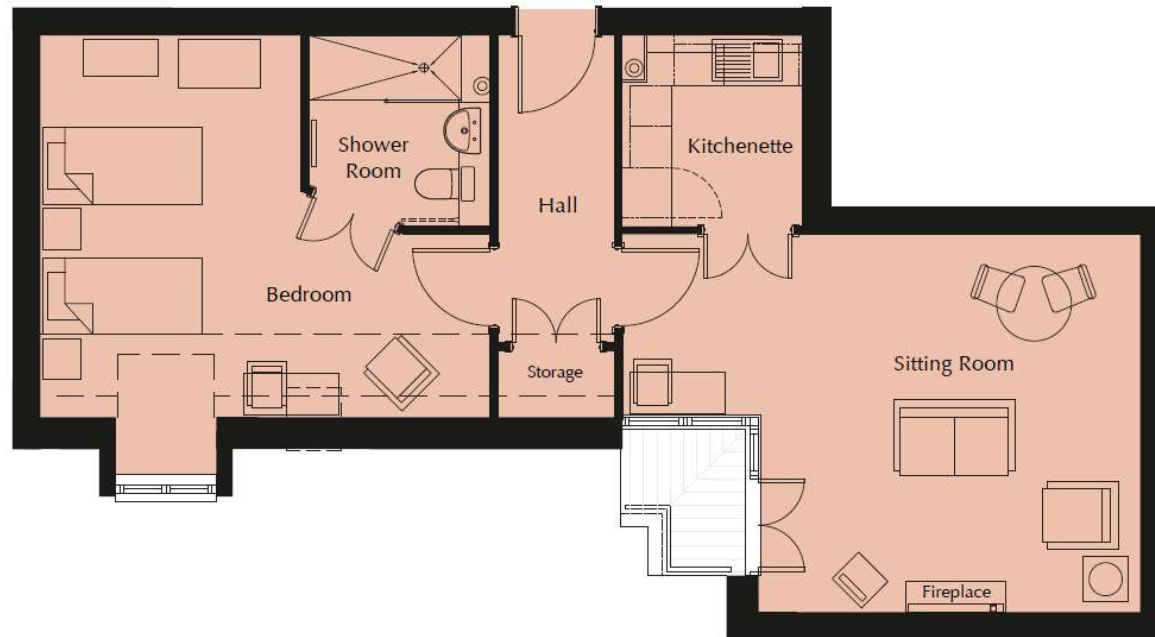
6245mm x 4555mm (max)  
20'6" x 15'0"

## Bedroom

5420mm x 4353mm\* (max)  
17'9" x 14'3"

## Shower Room

2345mm x 2210mm  
7'6" x 7'2"



\*Measurements taken at 1500mm skeliling height  
These particulars are intended to give a fair and substantially correct overall description. All dimensions are approximate. Internal layouts are indicative and subject to change.

