

4 Abingdon

Second Floor

Kitchen

4400mm x 2400mm

14'5" x 7'2"

Living Room

7013mm x 4315mm

23' x 14'2"

Bedroom 1

4895mm x 3340mm

16'1" x 10'11"

Bedroom 2

4895mm x 3080mm

16'1" x 10'1"

Bathroom

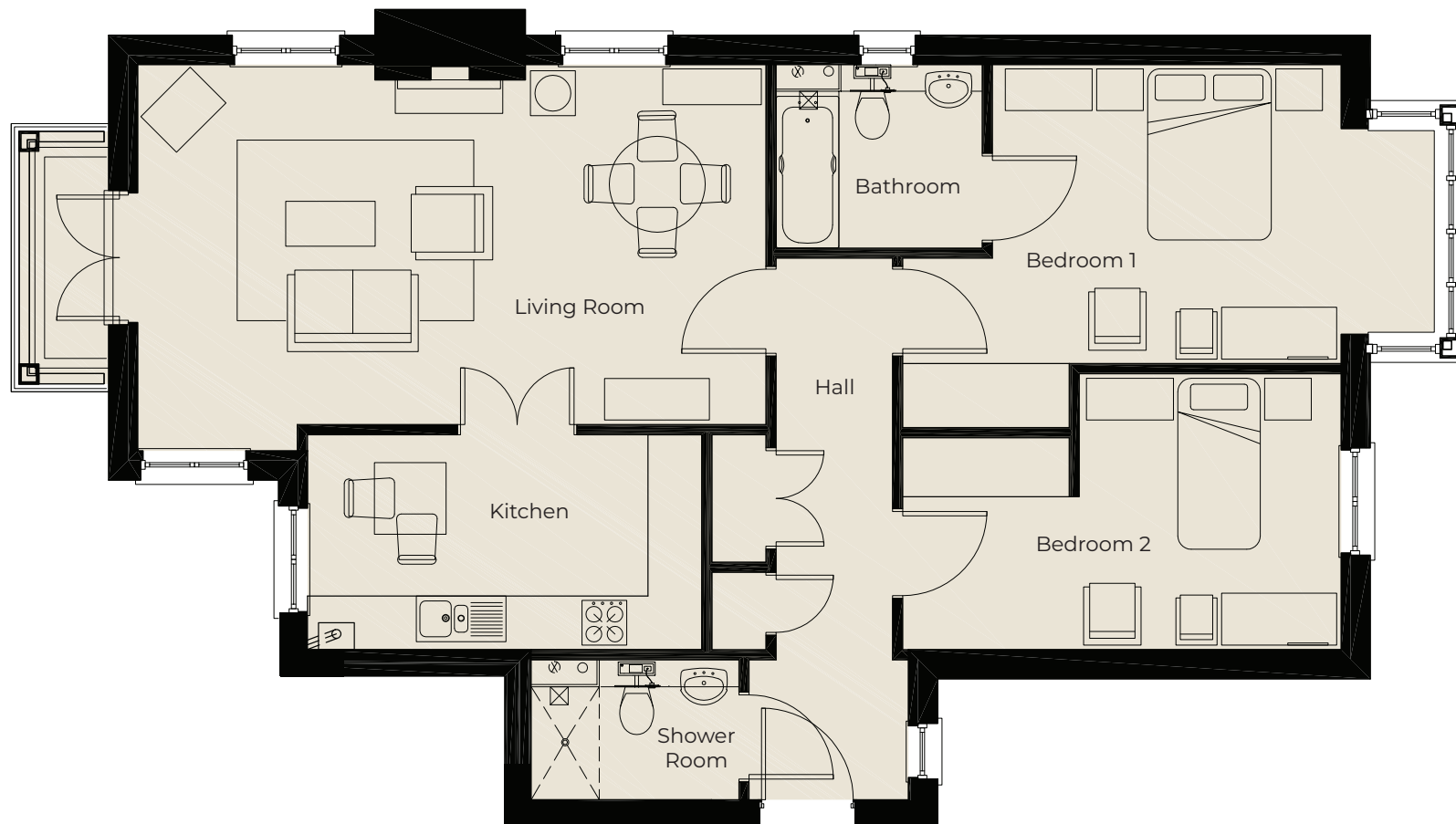
2300mm x 2050mm

7'7" x 6'9"

Shower Room

2320mm x 1563mm

7'7" x 5'2"



These particulars are intended to give a fair and substantially correct overall description.

Measurements have been taken at 1500mm skirting height.

All dimensions are approximate. Bedroom measurements include the wardrobe if applicable. Room measurements include bay windows if applicable.

Furniture layout is to give an indicative impression. Although all efforts have been made to ensure its accuracy at time of print dimensions, fixtures, fittings, finishes and specifications are subject to change without notice.

The properties are sold unfurnished.

