

32 Cookham

Second Floor | 656ft²

Kitchen

3708mm x 2769

12'2" x 9'1"

Living Room

4521mm x 3835mm

14'10" x 12'7"

Bedroom 1

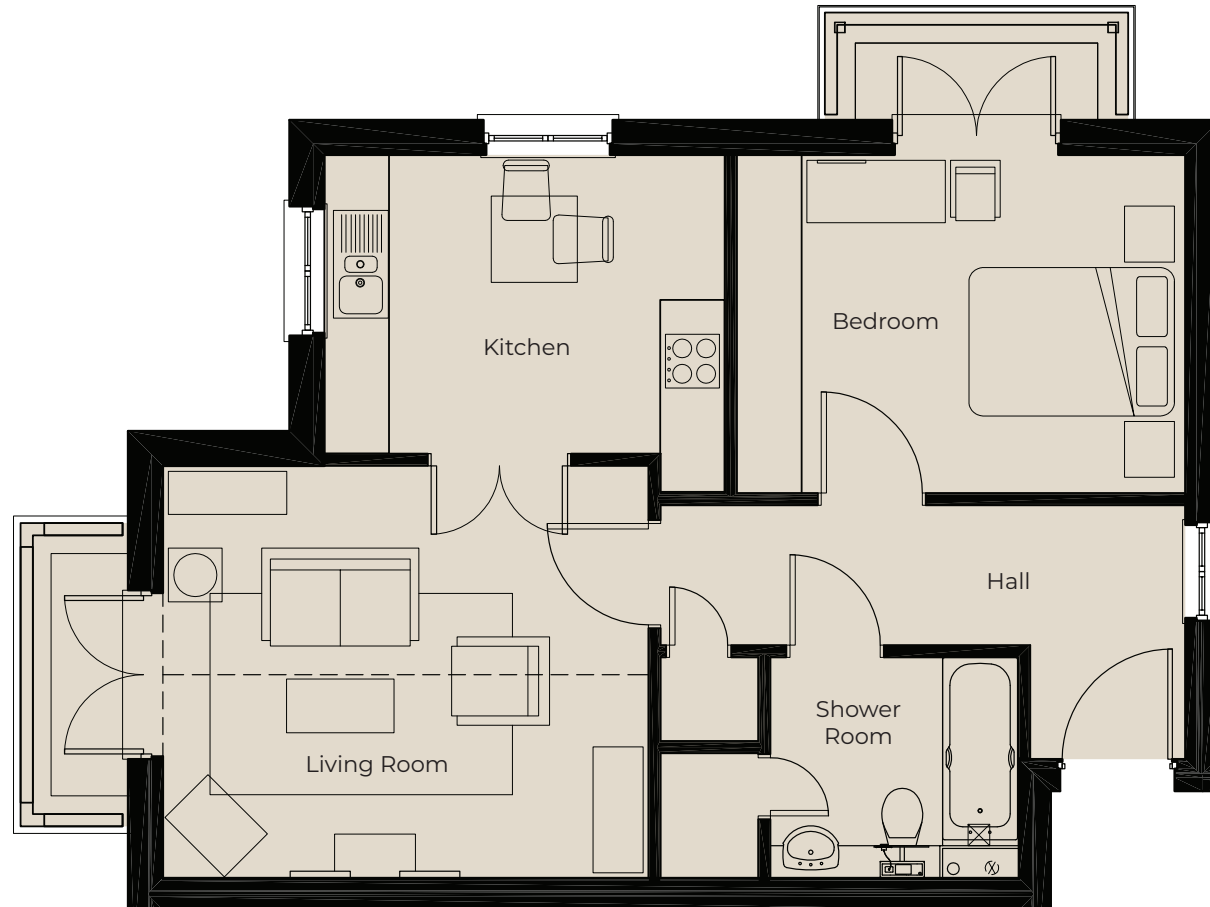
3150mm x 3556mm

10'4" x 11'8"

Shower Room

2311mm x 2286mm

7'7" x 7'6"



These particulars are intended to give a fair and substantially correct overall description.

Measurements have been taken at 1500mm skelling height.

All dimensions are approximate. Bedroom measurements include the wardrobe if applicable. Room measurements include bay windows if applicable.

Furniture layout is to give an indicative impression. Although all efforts have been made to ensure its accuracy at time of print dimensions, fixtures, fittings, finishes and specifications are subject to change without notice.

The properties are sold unfurnished.

