

# No. 4 Village Centre

First Floor | 55m<sup>2</sup>

## Kitchen

1981mm x 1981mm

6'6" x 6'6"

## Living Room

6299mm x 5080mm

20'8" x 16'8"

## Bedroom

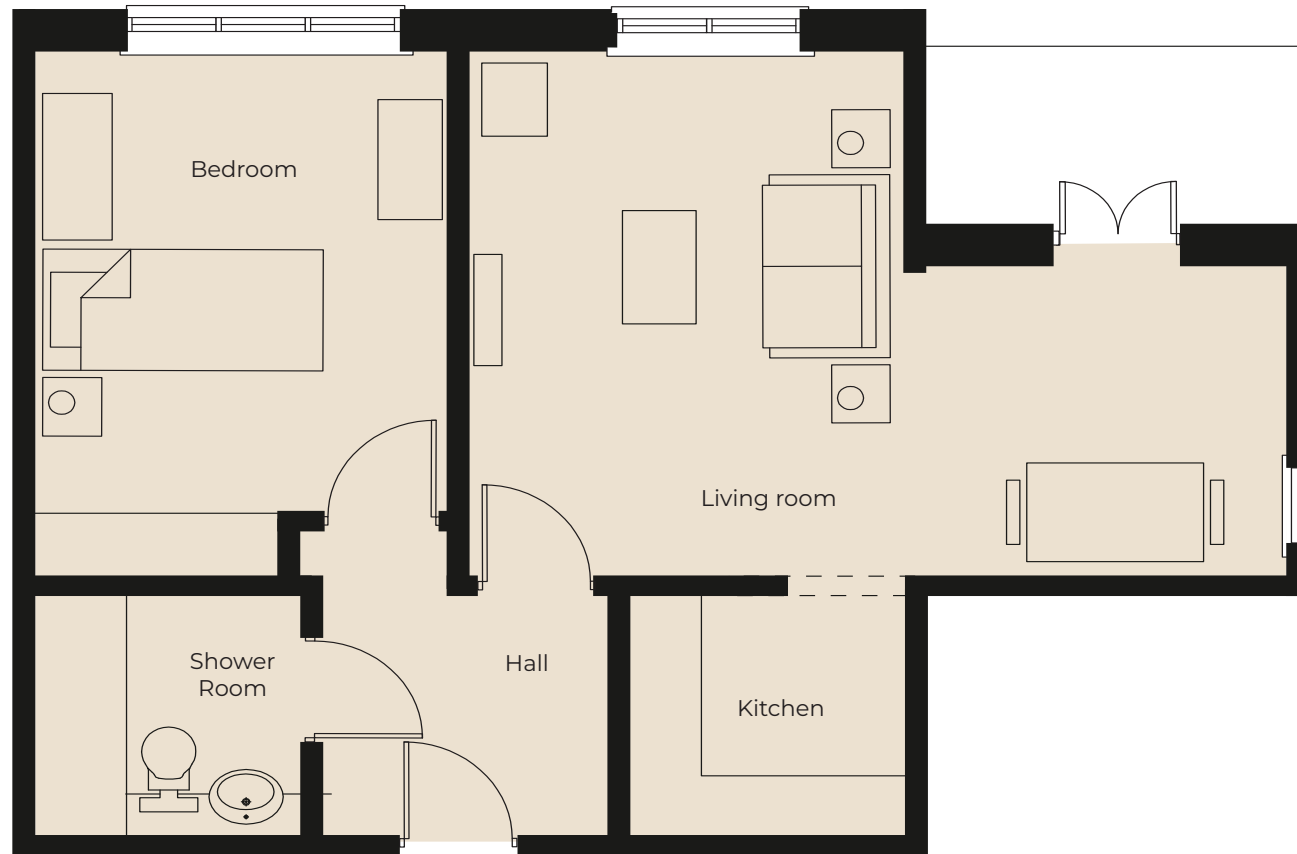
4775mm x 3149mm

15'8" x 10'4"

## Shower Room

2184mm x 1981mm

7'2" x 6'6"



These particulars are intended to give a fair and substantially correct overall description.

Measurements have been taken at 1500mm skelling height.

All dimensions are approximate. Bedroom measurements include the wardrobe if applicable. Room measurements include bay windows if applicable.

Furniture layout is to give an indicative impression. Although all efforts have been made to ensure its accuracy at time of print dimensions, fixtures, fittings, finishes and specifications are subject to change without notice.

The properties are sold unfurnished.

