

42 Pavilion Walk

First Floor | 924.6ft²

Kitchen

4258mm x 2050mm

14' x 6'9"

Living Room

5340mm x 5200mm

17'6" x 17'1"

Bedroom 1

4419mm x 3361mm

14'6" x 11'

Bedroom 2

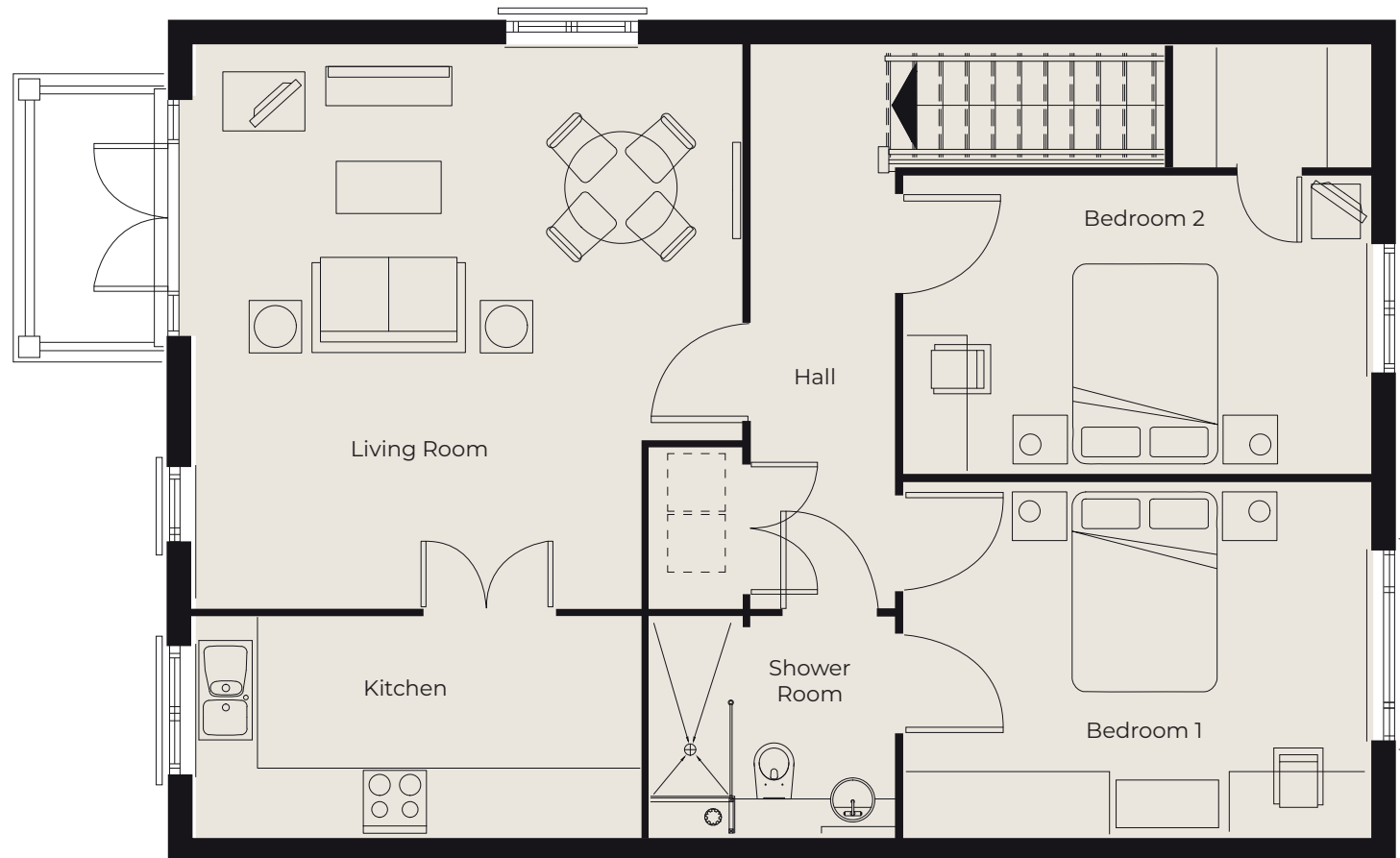
4419mm x 2795mm

14'6" x 9'2"

Shower Room

2300mm x 2050mm

7'7" x 6'9"



These particulars are intended to give a fair and substantially correct overall description.

Measurements have been taken at 1500mm skirting height.

All dimensions are approximate. Bedroom measurements include the wardrobe if applicable. Room measurements include bay windows if applicable.

Furniture layout is to give an indicative impression. Although all efforts have been made to ensure its accuracy at time of print dimensions, fixtures, fittings, finishes and specifications are subject to change without notice.

The properties are sold unfurnished.

