

18 Milestones Close

Ground Floor | 87.5m² – 942ft²

Kitchen

3123mm x 2352mm
10'2" x 7'7"

Living Room

6263mm x 5709mm
20'5" x 18'7"

Bedroom 1

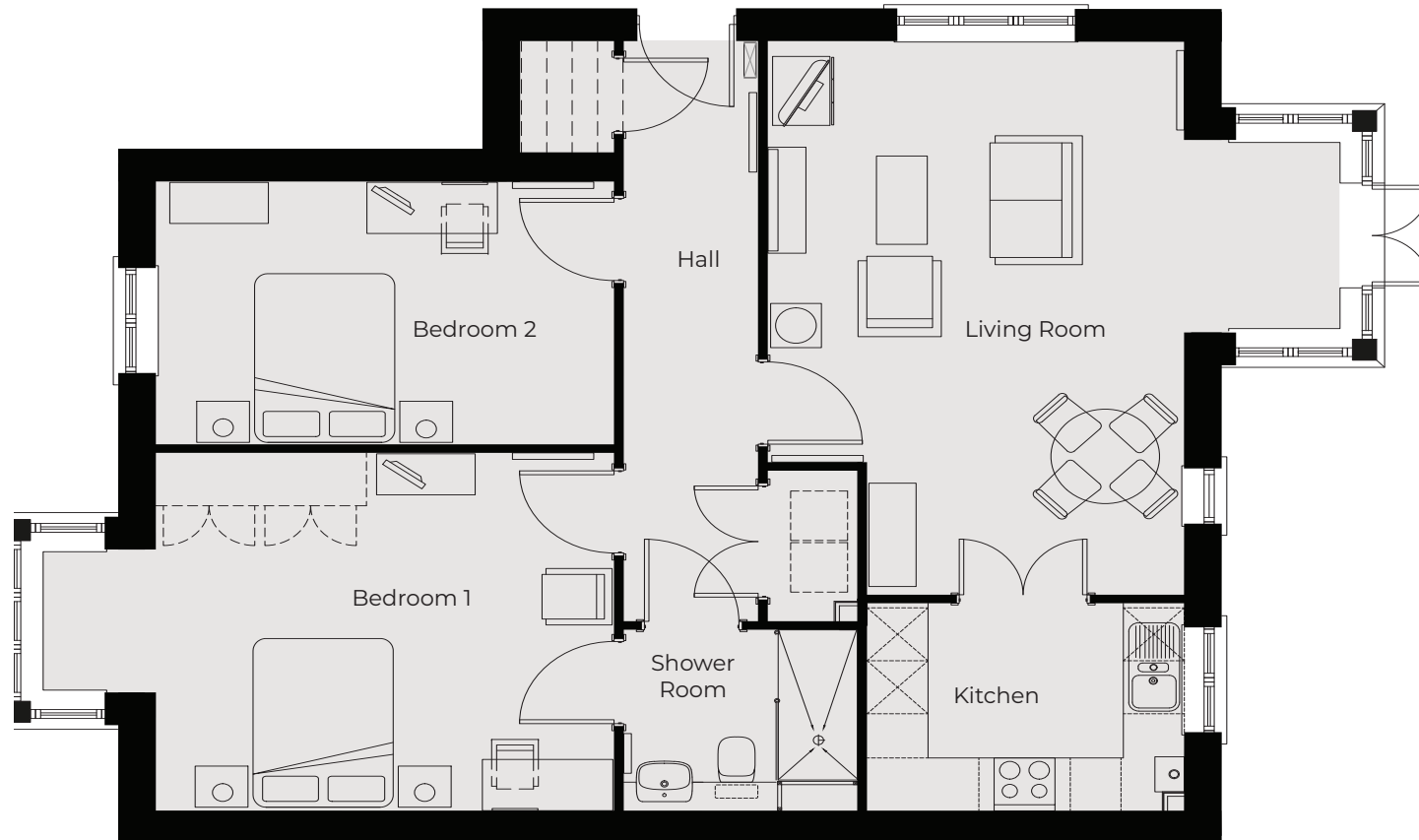
5640mm x 4055mm
18'5" x 13'3"

Shower Room

2300mm x 2050mm
7'5" x 6'7"

Bedroom 2

4512mm x 2972mm
14'8" x 9'7"



These particulars are intended to give a fair and substantially correct overall description.

Measurements have been taken at 1500mm skeliling height.

All dimensions are approximate. Bedroom measurements include the wardrobe if applicable. Room measurements include bay windows if applicable.

Furniture layout is to give an indicative impression. Although all efforts have been made to ensure its accuracy at time of print dimensions, fixtures, fittings, finishes and specifications are subject to change without notice.

The properties are sold unfurnished.

