

# Village Suite

Plot Number | 46  
Postal Address | 47

Second Floor | 45.83m<sup>2</sup> – 493.31ft<sup>2</sup>

## Kitchen

2300mm x 2180mm  
7'7" x 7'2"

## Sitting Room

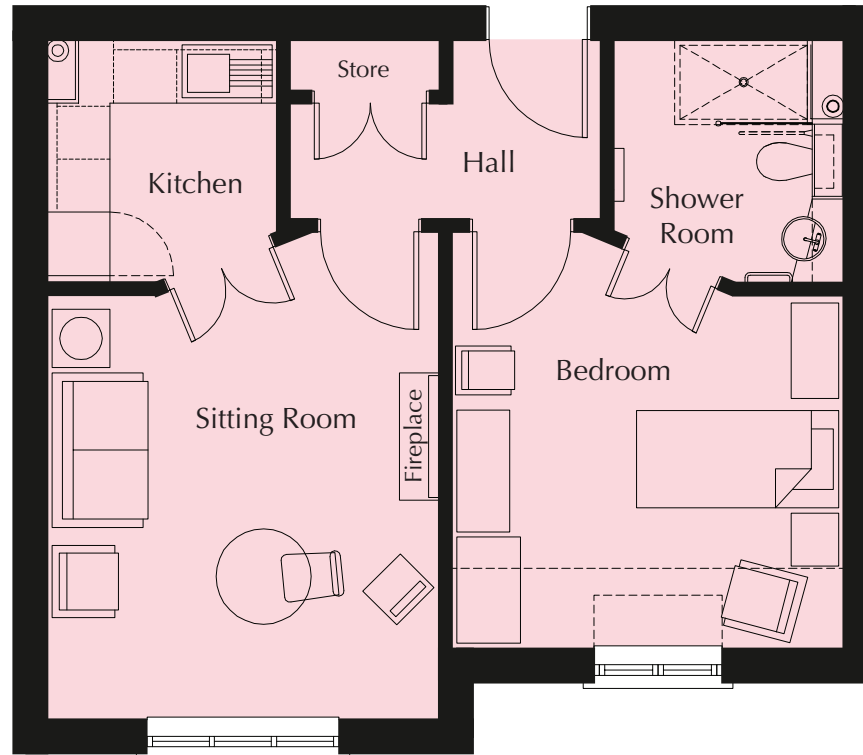
4610mm x 3710mm  
15'2" x 12'2"

## Bedroom

3935mm x 3710mm  
12'11" x 12'2"

## Shower Room

2300mm x 2180mm  
7'7" x 7'2"



These particulars are intended to give a fair and substantially correct overall description.

Measurements have been taken at 1500mm skirting height.

All dimensions are approximate. Bedroom measurements include the wardrobe if applicable. Room measurements include bay windows if applicable.

Furniture layout is to give an indicative impression. Although all efforts have been made to ensure its accuracy at time of print dimensions, fixtures, fittings, finishes and specifications are subject to change without notice.

