

Village Suite

Plot Number | 24
Postal Address | 25

First Floor | 45.83m² – 493ft²

Kitchen

2300mm x 2180mm
7'7" x 7'2"

Sitting Room

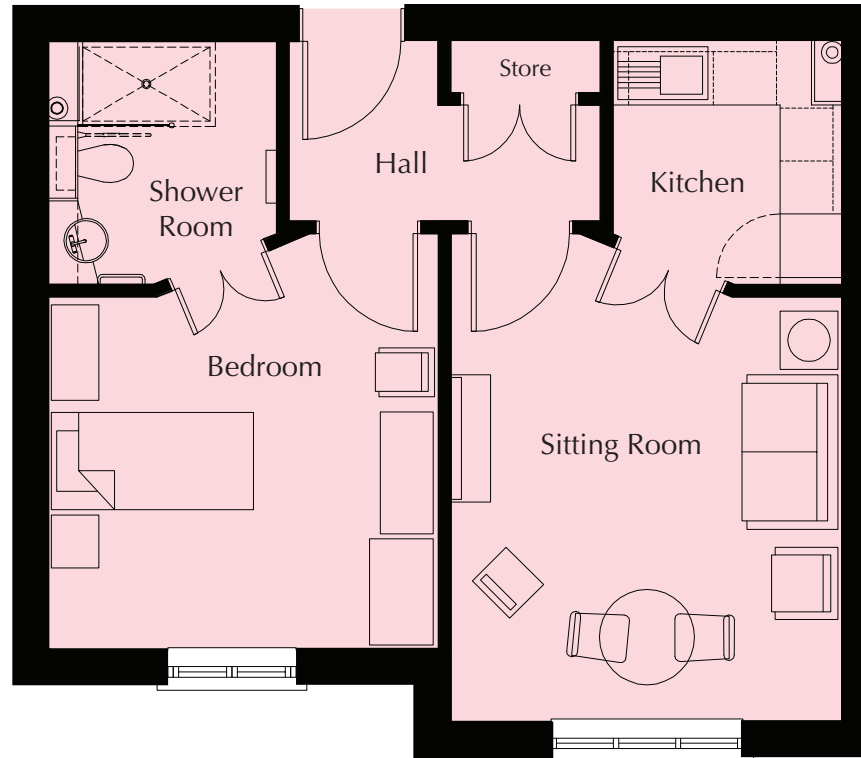
4010mm x 3710mm
13'2" x 12'2"

Bedroom

3710mm x 3335mm
12'2" x 10'11"

Shower Room

2300mm x 2180mm
7'7" x 7'2"



These particulars are intended to give a fair and substantially correct overall description.

Measurements have been taken at 1500mm skeliling height.

All dimensions are approximate. Bedroom measurements include the wardrobe if applicable. Room measurements include bay windows if applicable.

Furniture layout is to give an indicative impression. Although all efforts have been made to ensure its accuracy at time of print dimensions, fixtures, fittings, finishes and specifications are subject to change without notice.

