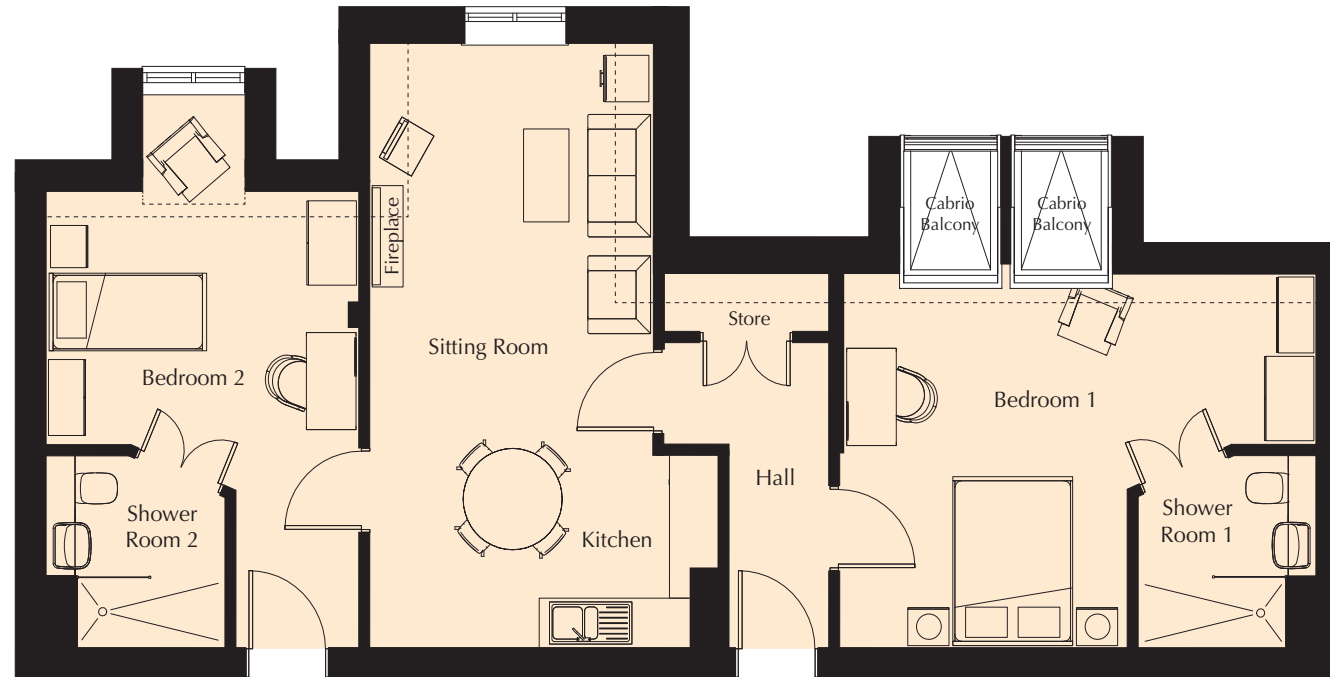


43 Village Centre

Third Floor

- Kitchen**
4233mm x 2300mm
13'11" x 7'7"
- Living Room**
4872mm x 3438mm
16' x 11'3"
- Bedroom 1**
5728mm x 4395mm
18'9" x 14'5"
- Shower Room 1**
2300mm x 2180mm
7'7" x 7'2"
- Bedroom 2**
5483mm x 3820mm
18' x 12'6"
- Shower Room 2**
2300mm x 2180mm
7'7" x 7'2"



These particulars are intended to give a fair and substantially correct overall description.

Measurements have been taken at 1500mm skelling height.

All dimensions are approximate. Bedroom measurements include the wardrobe if applicable. Room measurements include bay windows if applicable.

Furniture layout is to give an indicative impression. Although all efforts have been made to ensure its accuracy at time of print dimensions, fixtures, fittings, finishes and specifications are subject to change without notice.

The properties are sold unfurnished.

