

# 2 Village Centre

Floor 2 | 45.87m<sup>2</sup> – 493.74ft<sup>2</sup>

## Kitchen

2300mm x 2180mm

7'7" x 7'2"

## Living Room

5337mm x 3713mm

17'6" x 12'2"

## Bedroom

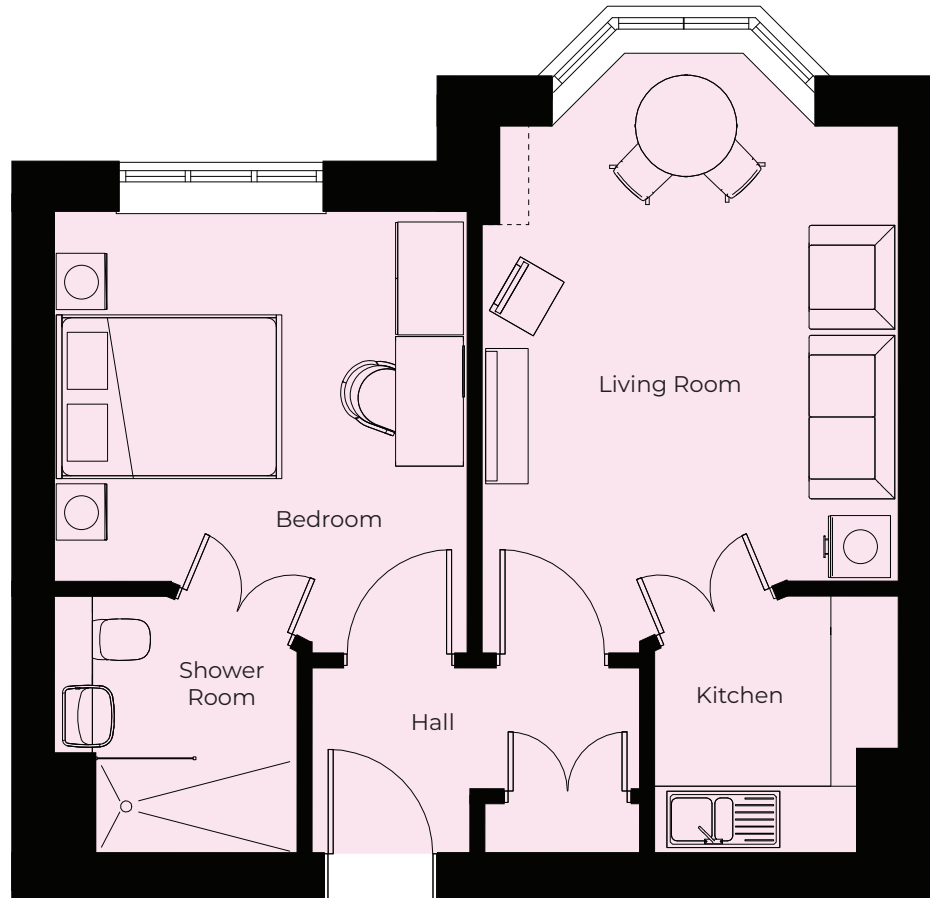
3941mm x 3634mm

12'11" x 11'11"

## Shower Room

2300mm x 2180mm

7'7" x 7'2"



These particulars are intended to give a fair and substantially correct overall description.

Measurements have been taken at 1500mm skirting height.

All dimensions are approximate. Bedroom measurements include the wardrobe if applicable. Room measurements include bay windows if applicable.

Furniture layout is to give an indicative impression. Although all efforts have been made to ensure its accuracy at time of print dimensions, fixtures, fittings, finishes and specifications are subject to change without notice.

The properties are sold unfurnished.

