

# 3 The Orchard

Ground Floor | 98.08m<sup>2</sup> – 1055.72ft<sup>2</sup>

## Kitchen

4300mm x 2569mm  
14'1" x 8'5"

## Living Room

6458mm x 4121mm  
13'6" x 21'2"

## Bedroom 1

4026mm x 6452mm  
13'3" x 21'2"

## Shower Room

2301mm x 2180mm  
7'7" x 7'2"

## Bedroom 2

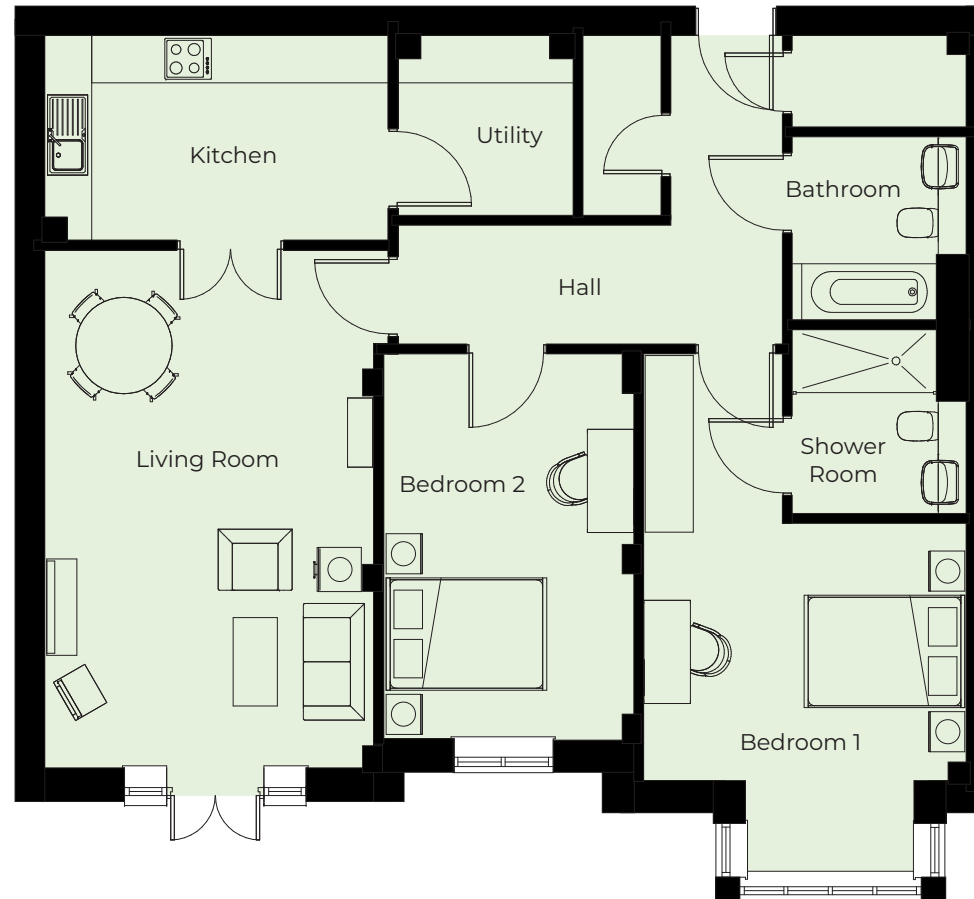
4804mm x 3138mm  
15'9" x 10'4"

## Bathroom

2300mm x 2180mm  
7'7" x 7'2"

## Utility

2203mm x 2252mm  
7'3" x 7'5"



These particulars are intended to give a fair and substantially correct overall description.

Measurements have been taken at 1500mm skeliling height.

All dimensions are approximate. Bedroom measurements include the wardrobe if applicable. Room measurements include bay windows if applicable.

Furniture layout is to give an indicative impression. Although all efforts have been made to ensure its accuracy at time of print dimensions, fixtures, fittings, finishes and specifications are subject to change without notice.

The properties are sold unfurnished.

