

28 The Avenue

Second Floor

Kitchen
2941mm x 2445mm
9'8" x 8'

Living Room
7099mm x 3816mm
23'3" x 12'6"

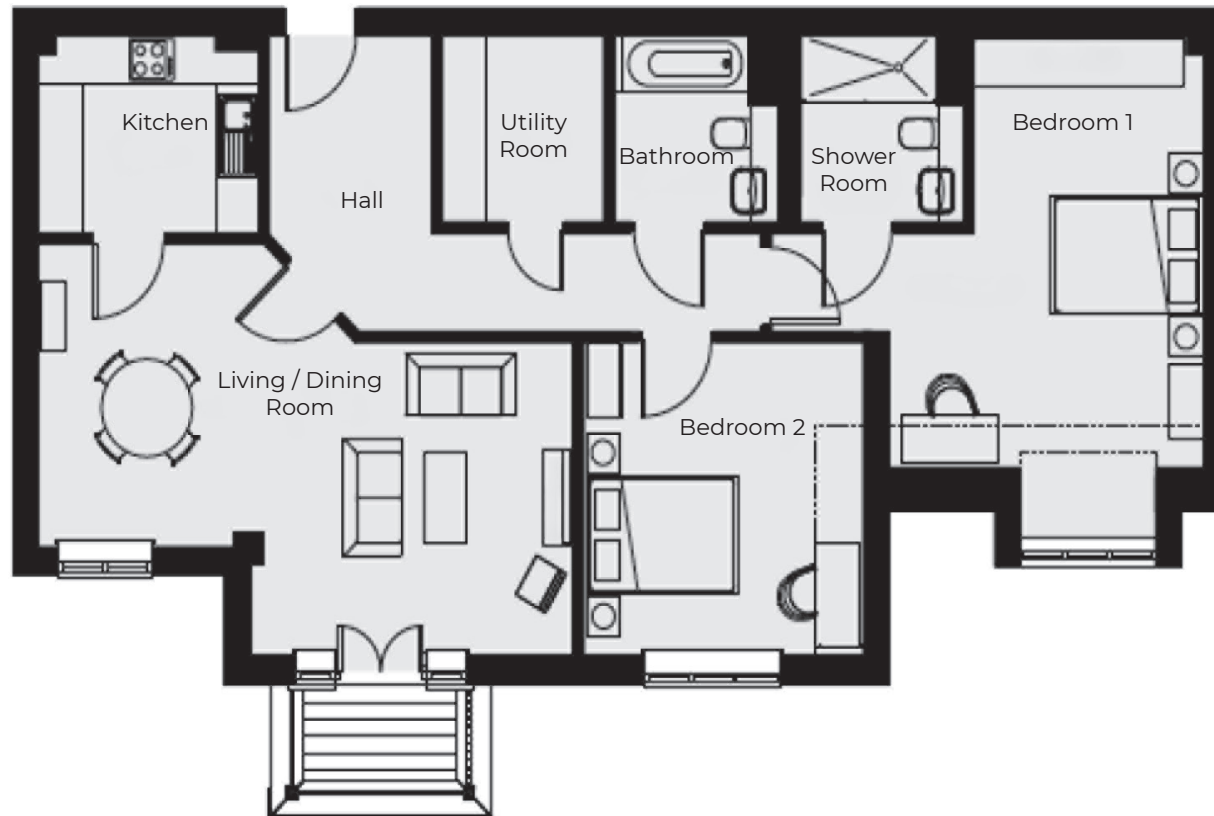
Bedroom 1
6116mm x 5763mm
20'1" x 18'11"

Shower Room
2300mm x 2180mm
7'7" x 7'2"

Bedroom 2
3816mm x 3718mm
12'6" x 12'2"

Bathroom
2300mm x 2180mm
7'7" x 7'2"

Utility
2300mm x 2171mm
7'7" x 7'1"



These particulars are intended to give a fair and substantially correct overall description.

Measurements have been taken at 1500mm skimming height.

All dimensions are approximate. Bedroom measurements include the wardrobe if applicable. Room measurements include bay windows if applicable.

Furniture layout is to give an indicative impression. Although all efforts have been made to ensure its accuracy at time of print dimensions, fixtures, fittings, finishes and specifications are subject to change without notice.

The properties are sold unfurnished.

