

# 1 The Orchard

Ground Floor | 98.08m<sup>2</sup> – 1055.72ft<sup>2</sup>

## Kitchen

3810mm x 2311mm  
12'6" x 7'7"

## Living Room

4282mm x 4281mm  
14'1" x 14'1"

## Dining Room

3393mm x 3314mm  
11'2" x 10'9"

## Bedroom 1

5600mm x 4285mm  
14'1" x 18'4"

## Shower Room

2300mm x 2180mm  
7'7" x 7'2"

## Bedroom 2

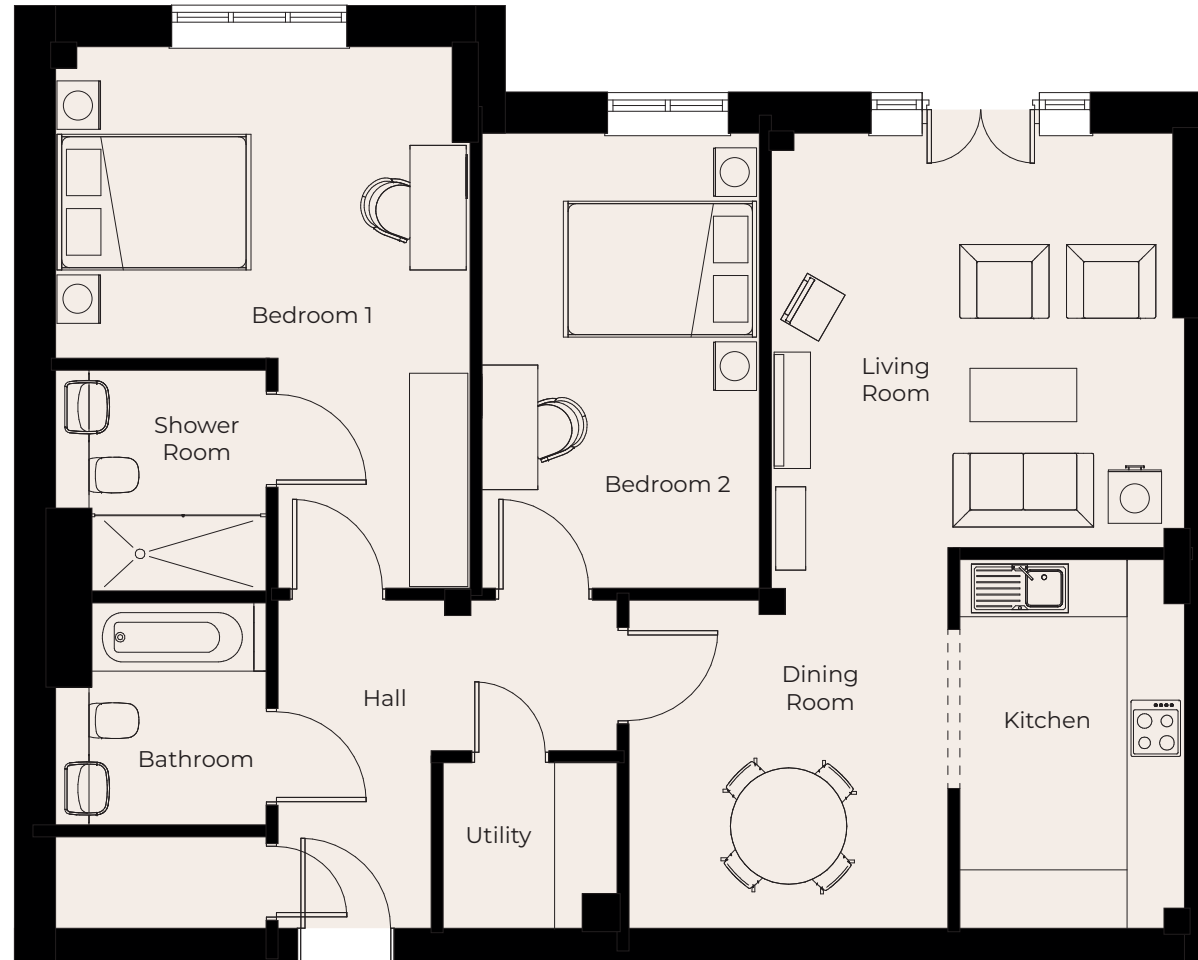
4698mm x 2880mm  
15'5" x 9'5"

## Bathroom

2299mm x 2179mm  
7'7" x 7'2"

## Utility

1810mm x 1711mm  
5'11" x 5'7"



These particulars are intended to give a fair and substantially correct overall description.

Measurements have been taken at 1500mm skimming height.

All dimensions are approximate. Bedroom measurements include the wardrobe if applicable. Room measurements include bay windows if applicable.

Furniture layout is to give an indicative impression. Although all efforts have been made to ensure its accuracy at time of print dimensions, fixtures, fittings, finishes and specifications are subject to change without notice.

The properties are sold unfurnished.

