

63 Tuckers Court

Ground Floor | 70.82m² – 762.3ft²

Kitchen

3669mm x 2100mm

12' x 6'11"

Sitting Room

6690mm x 4469mm (into bay)

21'11" x 14'8"

Bedroom

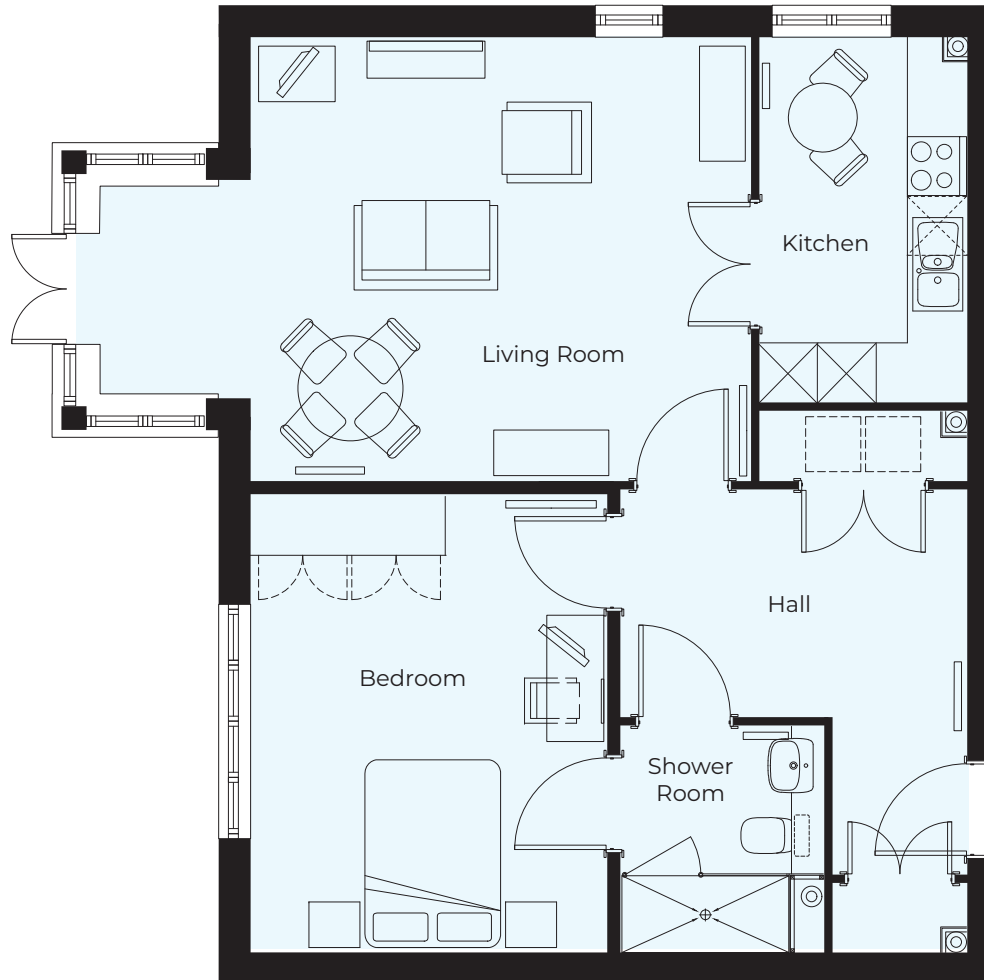
4640mm x 3585mm

15'3" x 11'9"

Shower Room

2300mm x 2050mm

7'7" x 6'9"



These particulars are intended to give a fair and substantially correct overall description.

Measurements have been taken at 1500mm skelling height.

All dimensions are approximate. Bedroom measurements include the wardrobe if applicable. Room measurements include bay windows if applicable.

Furniture layout is to give an indicative impression. Although all efforts have been made to ensure its accuracy at time of print dimensions, fixtures, fittings, finishes and specifications are subject to change without notice.

The properties are sold unfurnished.

