

# Apartment 4

## Courtyard Level

### Kitchen

3718mm x 3352mm  
12'2" x 11'

### Living Room

6065mm x 4084mm  
19'11" x 13'4"

### Bedroom

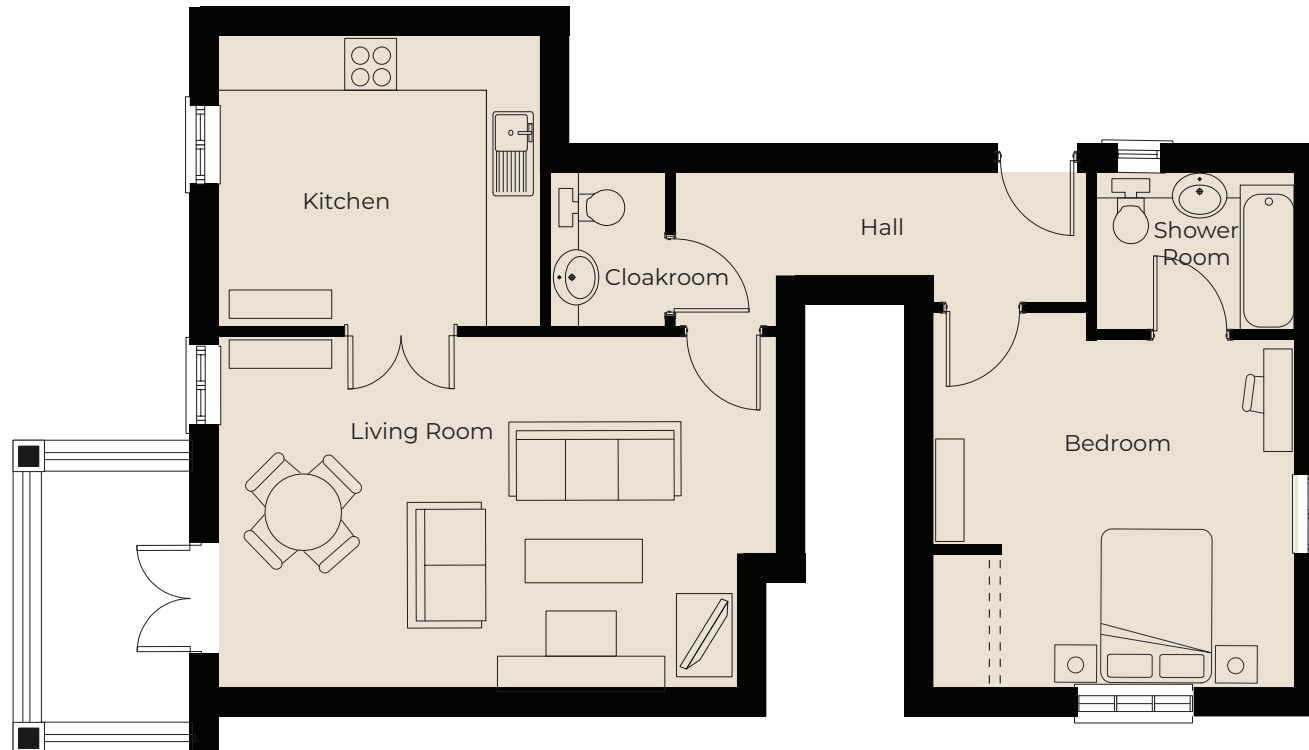
4236mm x 4084mm  
13'11" x 13'4"

### Shower Room

2407mm x 1828mm  
7'10" x 6'

### Cloakroom

1859mm x 1402mm  
6'1" x 4'6"



These particulars are intended to give a fair and substantially correct overall description.

Measurements have been taken at 1500mm skelling height.

All dimensions are approximate. Bedroom measurements include the wardrobe if applicable. Room measurements include bay windows if applicable.

Furniture layout is to give an indicative impression. Although all efforts have been made to ensure its accuracy at time of print dimensions, fixtures, fittings, finishes and specifications are subject to change without notice.

The properties are sold unfurnished.

