

30 Village Centre

Second Floor

Kitchen

2300mm x 2180mm

7'6" x 7'2"

Living Room

3901mm x 3710mm

16'8" x 12'2"

Bedroom

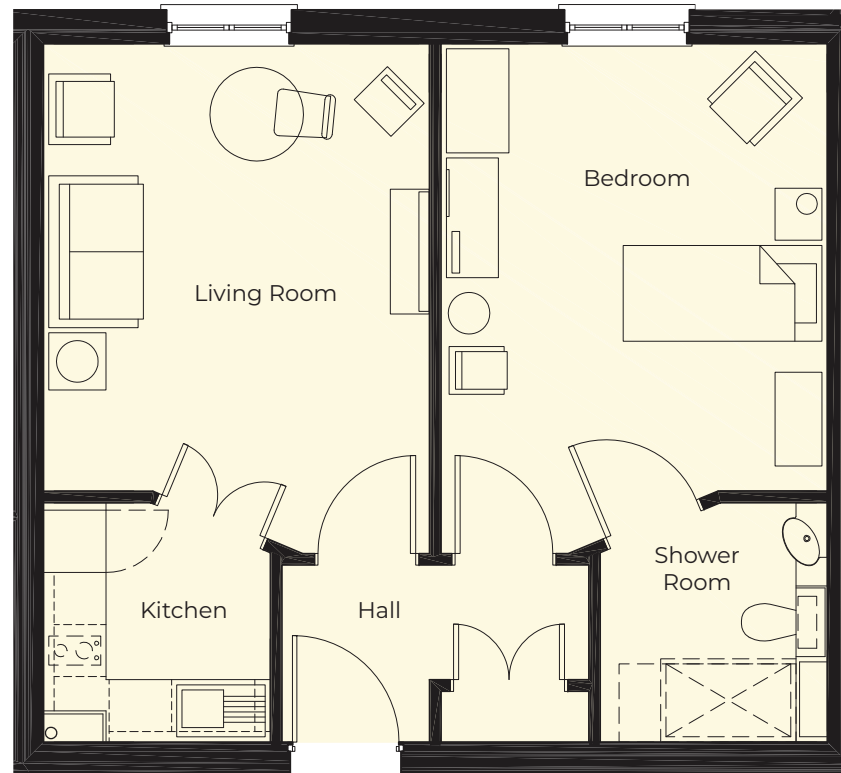
3901mm x 3710mm

16'8" x 12'2"

Shower Room

2300mm x 2180mm

7'6" x 7'2"



These particulars are intended to give a fair and substantially correct overall description.

Measurements have been taken at 1500mm skelling height.

All dimensions are approximate. Bedroom measurements include the wardrobe if applicable. Room measurements include bay windows if applicable.

Furniture layout is to give an indicative impression. Although all efforts have been made to ensure its accuracy at time of print dimensions, fixtures, fittings, finishes and specifications are subject to change without notice.

The properties are sold unfurnished.

