

25 Boveney

Ground Floor

Kitchen

3378mm x 2311mm

11'1" x 7'7"

Living Room

6502mm x 3784mm

21'4" x 12'5"

Bedroom 1

4343mm x 3581mm

14'3" x 11'9"

Shower room 1

2311mm x 2057mm

7'7" x 6'9"

Bedroom 2

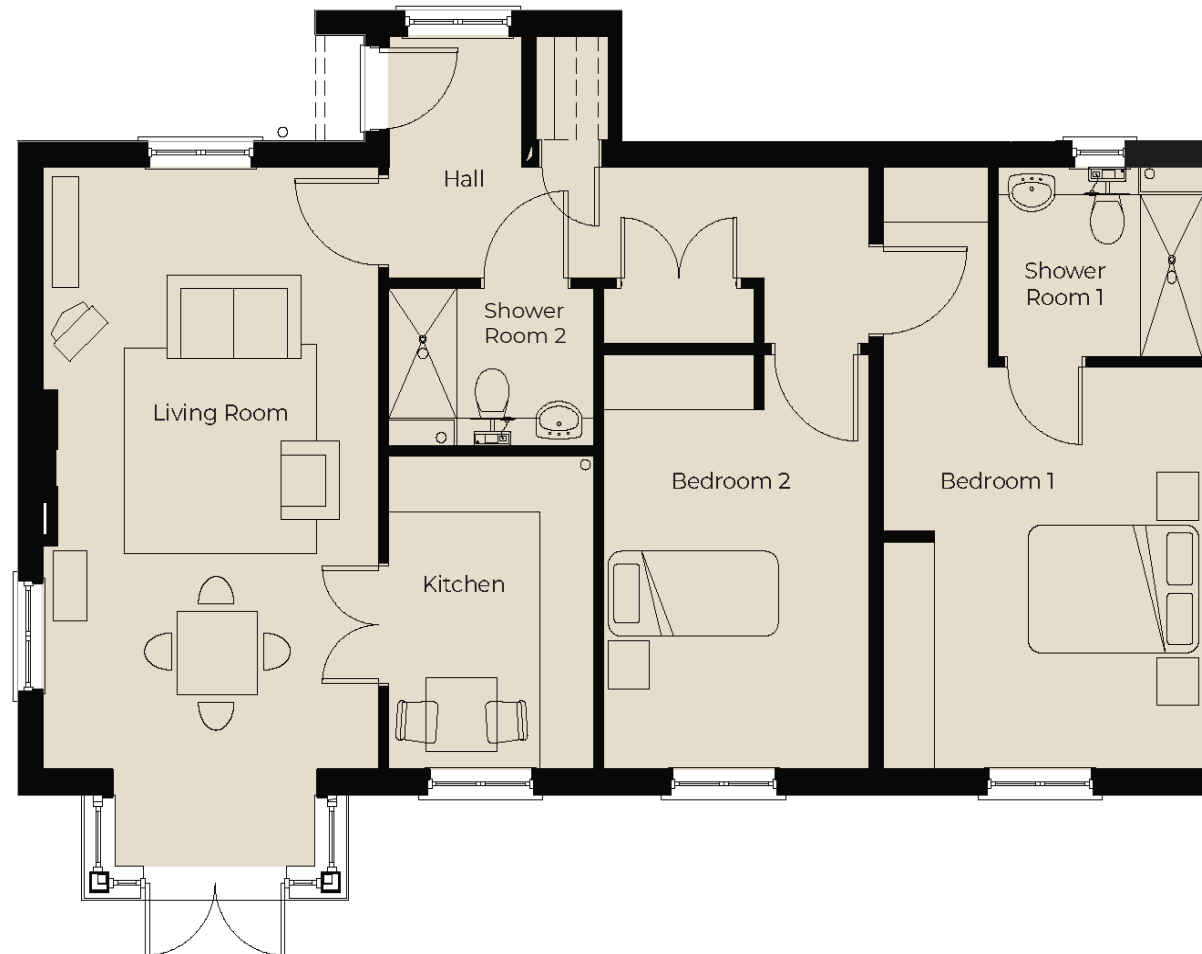
3886mm x 2971mm

12'9" x 9'9"

Shower Room 2

2311mm x 1701mm

7'7" x 5'7"



These particulars are intended to give a fair and substantially correct overall description.

Measurements have been taken at 1500mm skelling height.

All dimensions are approximate. Bedroom measurements include the wardrobe if applicable. Room measurements include bay windows if applicable.

Furniture layout is to give an indicative impression. Although all efforts have been made to ensure its accuracy at time of print dimensions, fixtures, fittings, finishes and specifications are subject to change without notice.

The properties are sold unfurnished.

