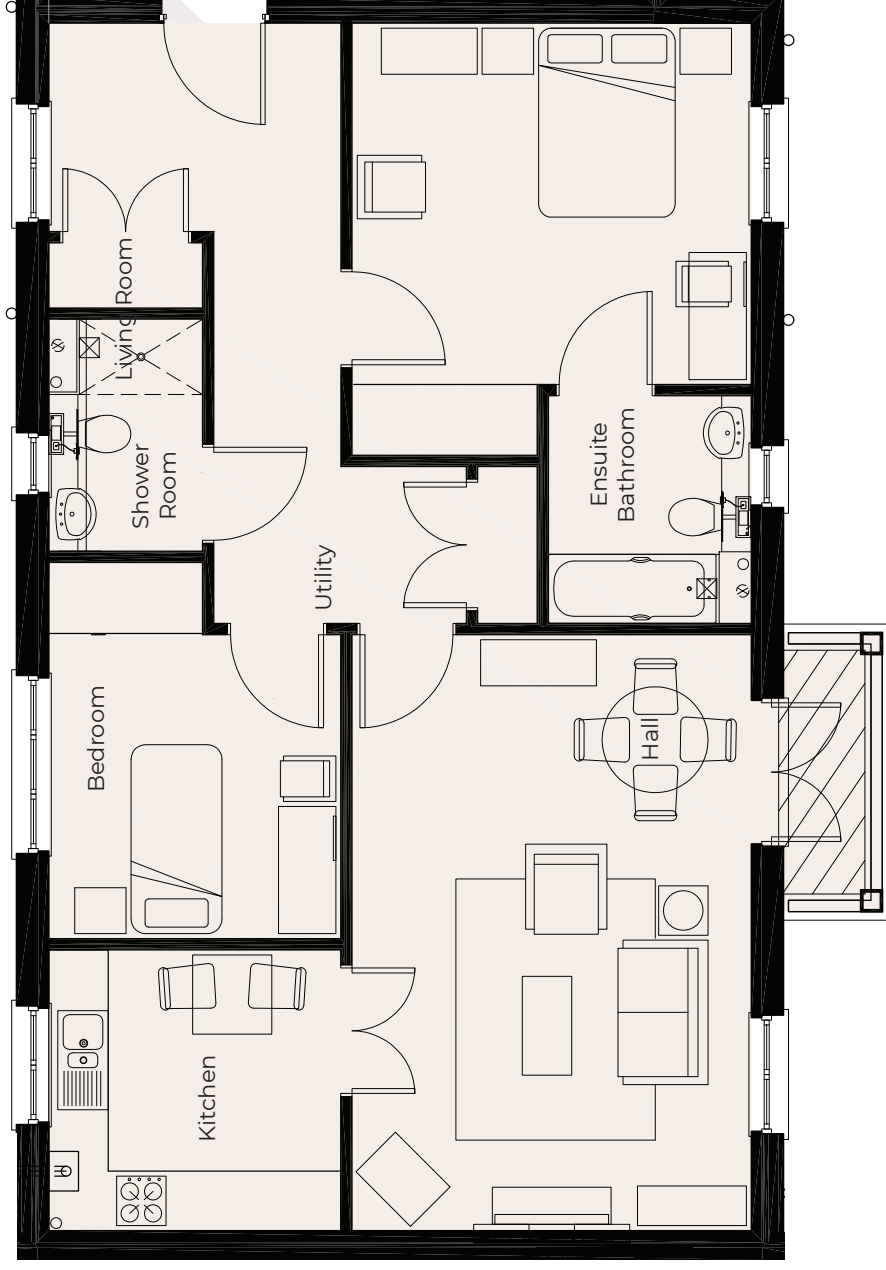


11 Abingdon

Ground Floor



Kitchen	2950mm x 2836mm 9'8" x 9'4"
Living Room	6020mm x 4035mm 19'9" x 13'3"
Main Bedroom	4034mm x 3650mm 13'3" x 12'
Ensuite Bathroom	2300mm x 2050mm 7'7" x 6'9"
Second Bedroom	3083mm x 2950mm 10'1" x 9'8"
Shower Room	2345mm x 1553mm 7'8" x 5'1"

These particulars are intended to give a fair and substantially correct overall description.

Measurements have been taken at 1500mm skimming height.

All dimensions are approximate. Bedroom measurements include the wardrobe if applicable. Room measurements include bay windows if applicable.

Furniture layout is to give an indicative impression. Although all efforts have been made to ensure its accuracy at time of print dimensions, fixtures, fittings, finishes and specifications are subject to change without notice.

The properties are sold unfurnished.

