

Apartment 24

Ground Floor | 567ft²

Kitchen

2692 x 2641mm

8'10" x 8'8"

Living Room

3886 x 3505mm

12'9" x 11'6"

Bedroom 1

2972 x 2845mm

9'9" x 9'4"

Bathroom

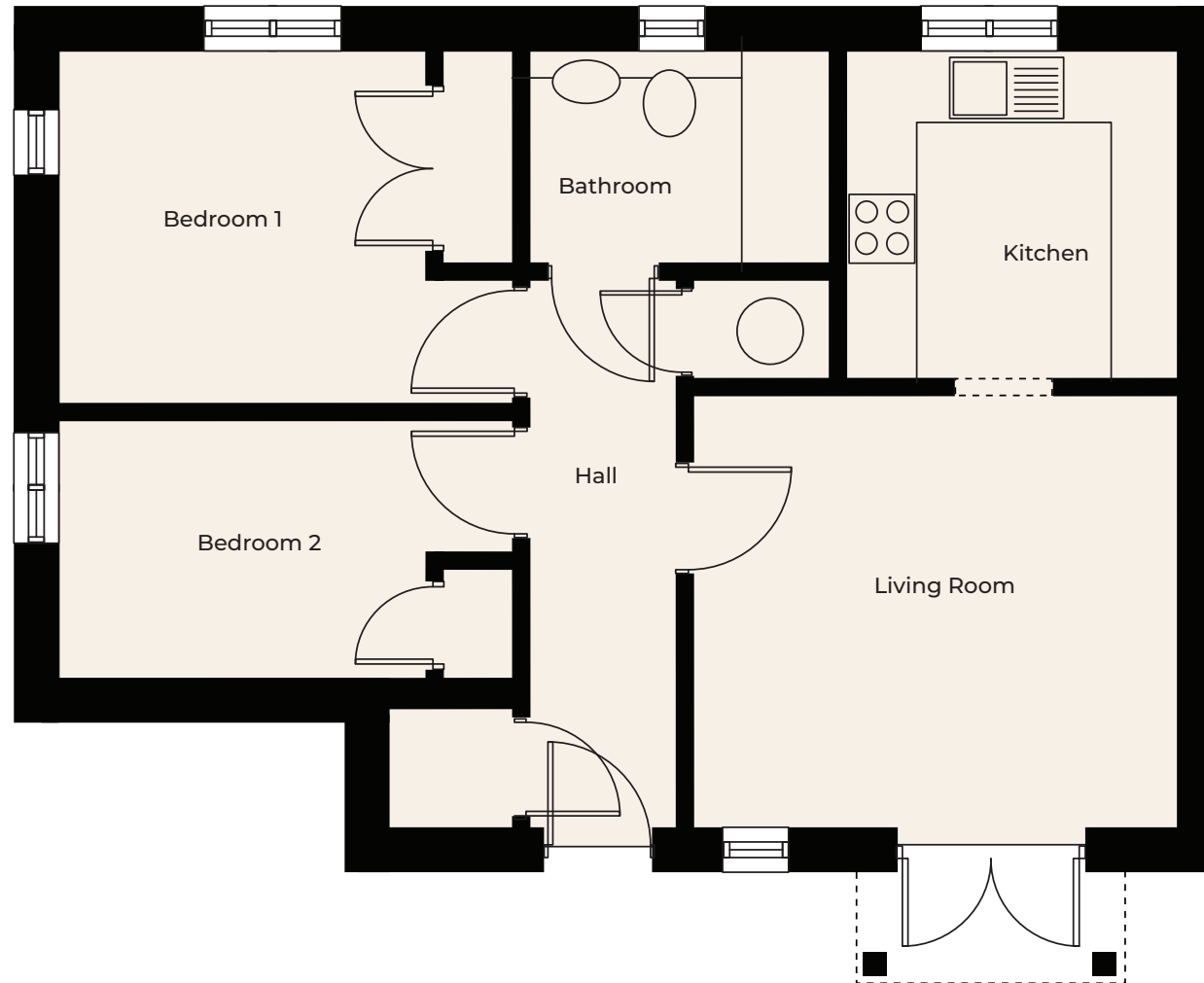
2388 x 1753mm

7'10" x 5'9"

Bedroom 2

3658 x 2083mm

12' x 6'10"



These particulars are intended to give a fair and substantially correct overall description.

Measurements have been taken at 1500mm skelling height.

All dimensions are approximate. Bedroom measurements include the wardrobe if applicable. Room measurements include bay windows if applicable.

Furniture layout is to give an indicative impression. Although all efforts have been made to ensure its accuracy at time of print dimensions, fixtures, fittings, finishes and specifications are subject to change without notice.

The properties are sold unfurnished.

