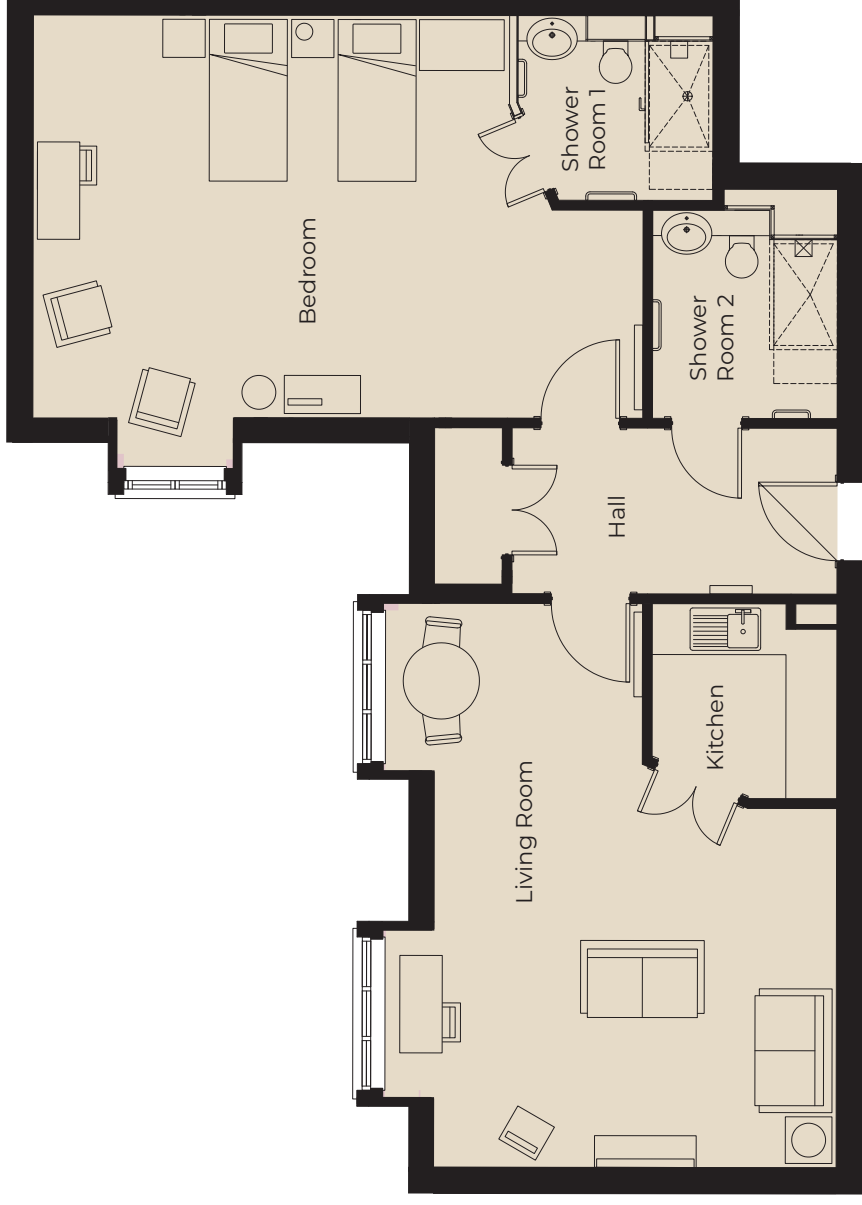


46 Village Centre

Second Floor | 127.5m² (917ft²)

- Kitchen**
2300mm x 2180mm
7'7" x 7'2"
- Living Room**
6660mm x 4750mm
21'10" x 15'7"
- Bedroom**
7200mm x 4750mm
23'8" x 15'7"
- Shower Room 1**
2300mm x 2180mm
7'7" x 7'2"
- Shower Room 2**
2460mm x 2180mm
8'1" x 7'2"



These particulars are intended to give a fair and substantially correct overall description.

Measurements have been taken at 1500mm skimming height.

All dimensions are approximate. Bedroom measurements include the wardrobe if applicable. Room measurements include bay windows if applicable.

Furniture layout is to give an indicative impression. Although all efforts have been made to ensure its accuracy at time of print dimensions, fixtures, fittings, finishes and specifications are subject to change without notice.

The properties are sold unfurnished.

