

# Apartment 32

Second floor | 58.87m<sup>2</sup> – 634ft<sup>2</sup>

## Kitchenette

2500mm x 2120mm

8'2" x 6'11"

## Living Room

5710mm x 3640mm

18'9" x 11'11"

## Bedroom

6300mm x 3600mm

20'8" x 11'9"

## Shower Room

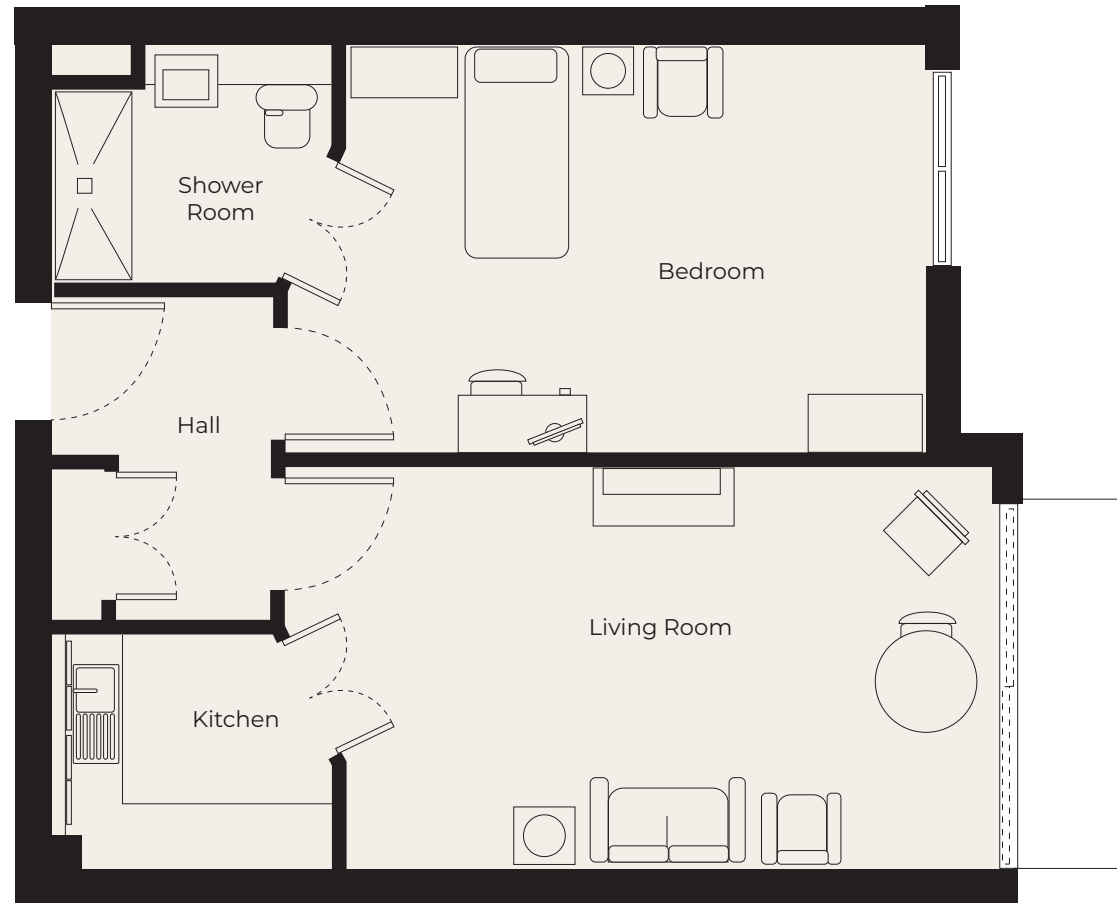
2500mm x 2120mm

8'2" x 6'11"

## Balcony

3750mm x 1800mm

12'3" x 5'9"



These particulars are intended to give a fair and substantially correct overall description.

Measurements have been taken at 1500mm skelling height.

All dimensions are approximate. Bedroom measurements include the wardrobe if applicable. Room measurements include bay windows if applicable.

Furniture layout is to give an indicative impression. Although all efforts have been made to ensure its accuracy at time of print dimensions, fixtures, fittings, finishes and specifications are subject to change without notice.

The properties are sold unfurnished.

