

# No. 10 Village Centre

Ground floor | 58.87m<sup>2</sup> – 634ft<sup>2</sup>

## Kitchenette

2500mm x 2120mm

8'2" x 6'11"

## Living Room

6285mm x 3655mm

20'6" x 11'9"

## Bedroom

5731mm x 3655mm

18'8" x 12'2"

## Shower Room

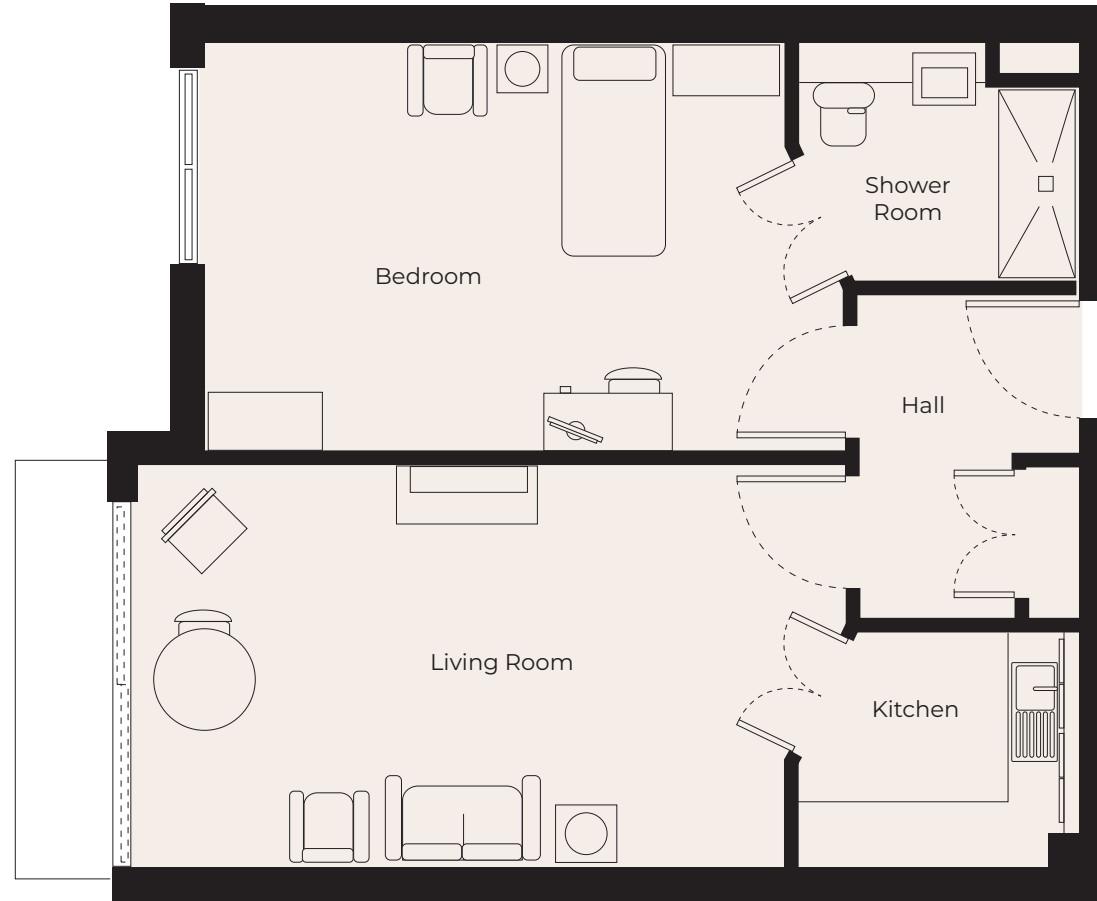
2500mm x 2120mm

8'2" x 6'11"

## Patio Area

3500mm x 2500mm

11'5" x 8'2"



These particulars are intended to give a fair and substantially correct overall description.

Measurements have been taken at 1500mm skimming height.

All dimensions are approximate. Bedroom measurements include the wardrobe if applicable. Room measurements include bay windows if applicable.

Furniture layout is to give an indicative impression. Although all efforts have been made to ensure its accuracy at time of print dimensions, fixtures, fittings, finishes and specifications are subject to change without notice.

The properties are sold unfurnished.

