

Village Suite

Ground Floor | 60.73m² – 654ft²

Plot Number | 5

Postal Address | 5

Kitchenette

2300mm x 2180mm
7'7" x 7'2"

Sitting Room

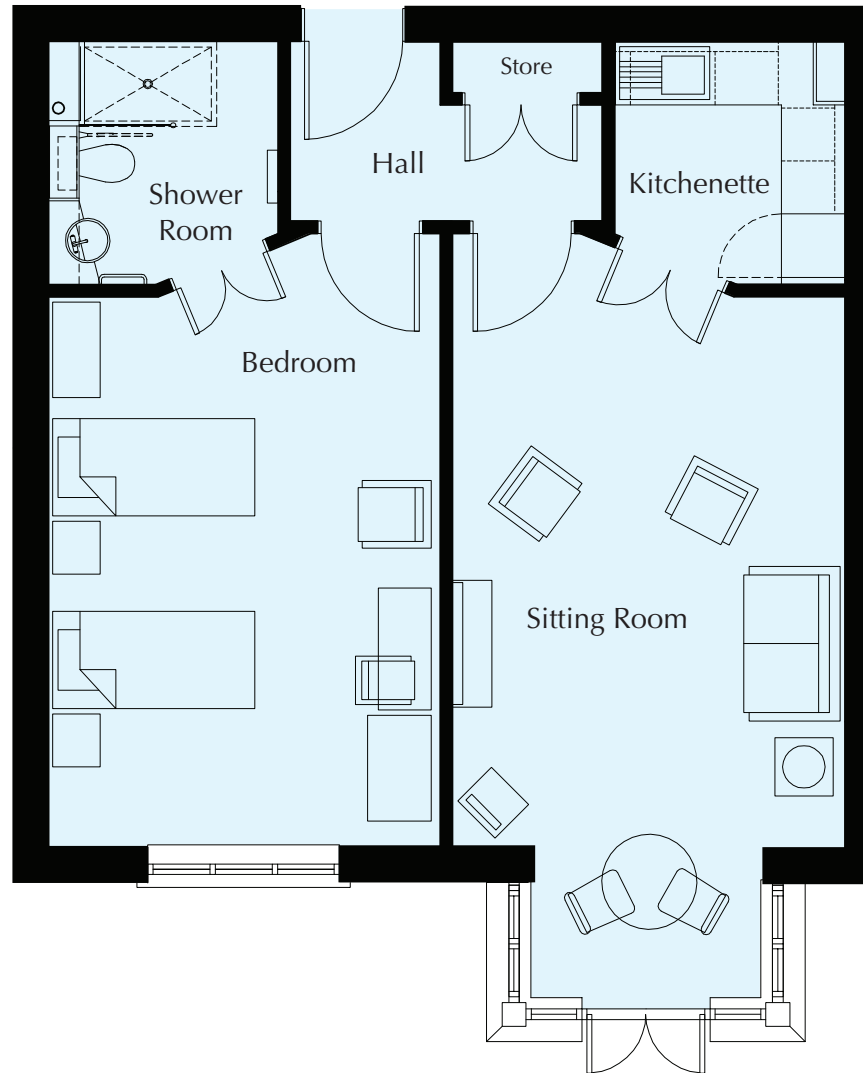
6616mm x 3710mm
21'8" x 12'2"

Bedroom

5200mm x 3710mm
17'1" x 12'2"

Shower Room

2300mm x 2180mm
7'7" x 7'2"



These particulars are intended to give a fair and substantially correct overall description.

Measurements have been taken at 1500mm ceiling height.

All dimensions are approximate. Bedroom measurements include the wardrobe if applicable. Room measurements include bay windows if applicable.

Furniture layout is to give an indicative impression. Although all efforts have been made to ensure its accuracy at time of print dimensions, fixtures, fittings, finishes and specifications are subject to change without notice. The properties are sold unfurnished.

