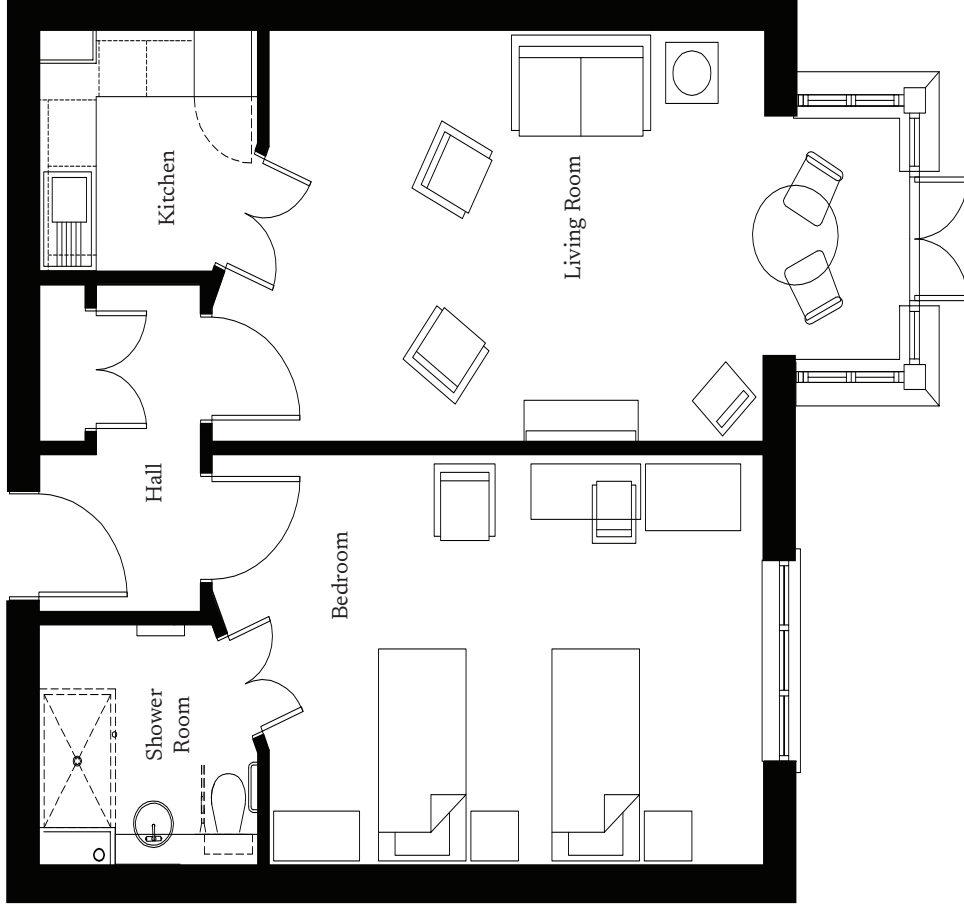


No. 5 Village Centre

Ground Floor | 654ft²

Kitchen	2300mm x 2180mm
	7'7" x 7'2"
Living Room	6616mm x 3710mm
	21'8" x 12'2"
Bedroom	5200mm x 3710mm
	17'1" x 12'2"
En suite	2300mm x 2180mm
	7'7" x 7'2"



These particulars are intended to give a fair and substantially correct overall description. Measurements have been taken at 1500mm ceiling height.

All dimensions are approximate. Bedroom measurements include the wardrobe if applicable. Room measurements include bay windows if applicable.

Furniture layout is to give an indicative impression. Although all efforts have been made to ensure its accuracy at time of print dimensions, fixtures, fittings, finishes and specifications are subject to change without notice.

The properties are sold unfurnished.

