

# 21 Village Centre

First Floor | 76.84m<sup>2</sup> – 827ft<sup>2</sup>

## Kitchen

2300mm x 2180mm  
7'7" x 7'2"

## Sitting Room

5819mm x 3710mm  
19'1" x 12'2"

## Bedroom 1

4219mm x 3710mm  
13'10" x 12'2"

## Shower Room 1

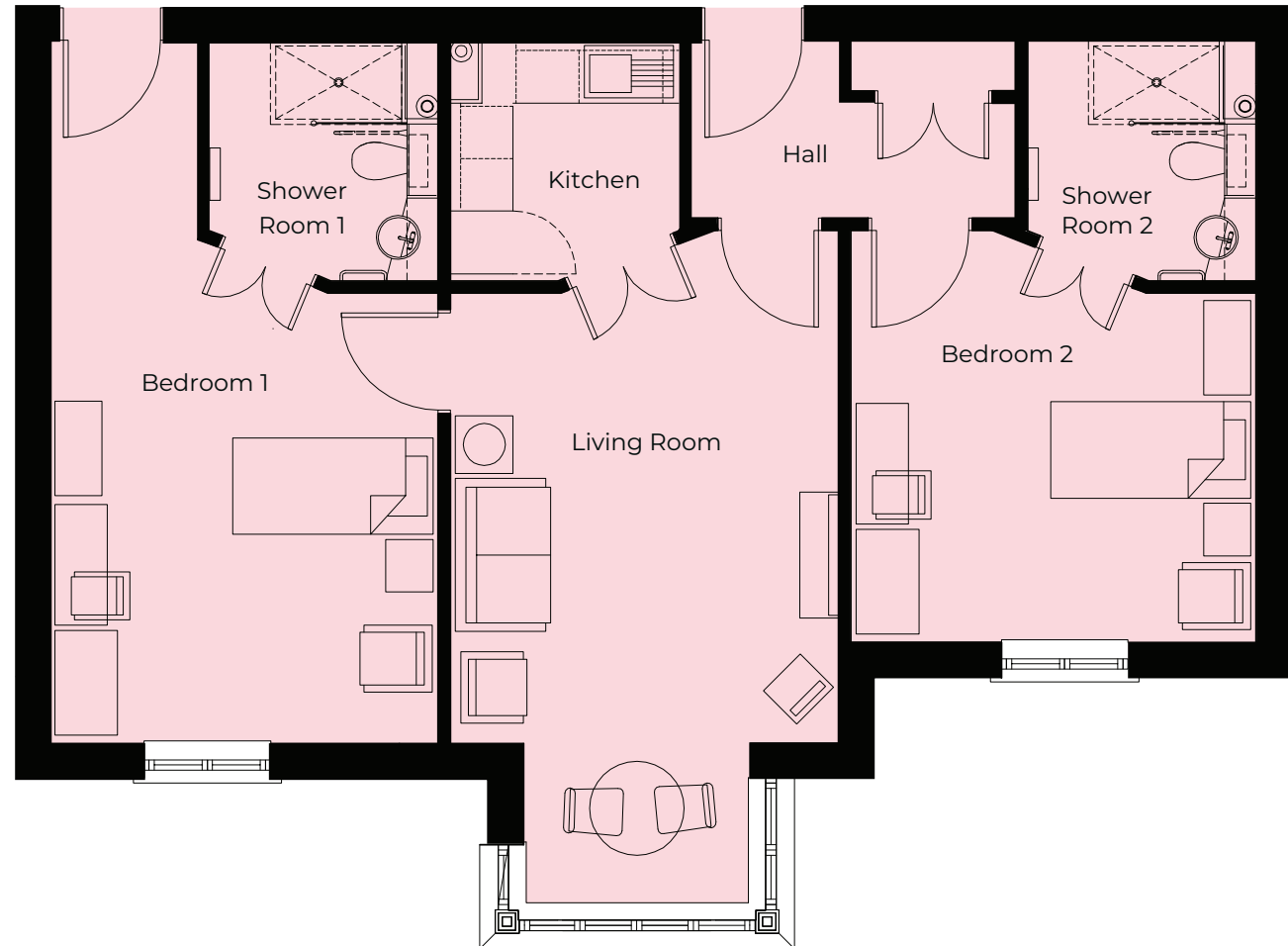
2300mm x 2180mm  
7'7" x 7'2"

## Bedroom 2

3867mm x 3335mm  
12'8" x 10'11"

## Shower Room 2

2300mm x 2180mm  
7'7" x 7'2"



These particulars are intended to give a fair and substantially correct overall description.

Measurements have been taken at 1500mm skiling height.

All dimensions are approximate. Bedroom measurements include the wardrobe if applicable. Room measurements include bay windows if applicable. Furniture layout is to give an indicative impression. Although all efforts have been made to ensure its accuracy at time of print dimensions, fixtures, fittings, finishes and specifications are subject to change without notice.

