

# Apartment 46, £230,000

(Other charges apply)

RICHMOND  
VILLAGES

Part of Bupa

SF

1



1



EPC - C



## 1 bedroom second floor apartment

A generous one bedroom, second floor assisted living apartment offering expansive views across the entrance to Richmond Villages, Aston on Trent. The apartment is situated close to the main village center and village facilities.

### Specification

- A spacious hallway which provides access to all rooms and a storage cupboard.
- The living room is well proportioned with a feature electric fireplace, doors to kitchenette and large window with views across the village and meadow.
- A kitchenette with wall and base units and wood effect work surfaces and a built in undercounter fridge.
- The main bedroom is a light and airy space and features a modern walk-in shower room.
- A wet room style en-suite with an enclosed walk in shower, white suite comprising WC and wash basin set with a high quality vanity unit, heated towel rail and shaver point.
- TV and satellite points\*.
- Well stocked flower borders and lawns maintained by the Village Gardeners.
- Allocated parking space for one car.



\*Satellite subscription not included.

Important Notice: These particulars are intended to give a fair and substantially correct overall description. Other fees and charges apply, please contact the Village Advisers for further details. Properties are sold on a 125 year lease and this property has 125 years remaining.

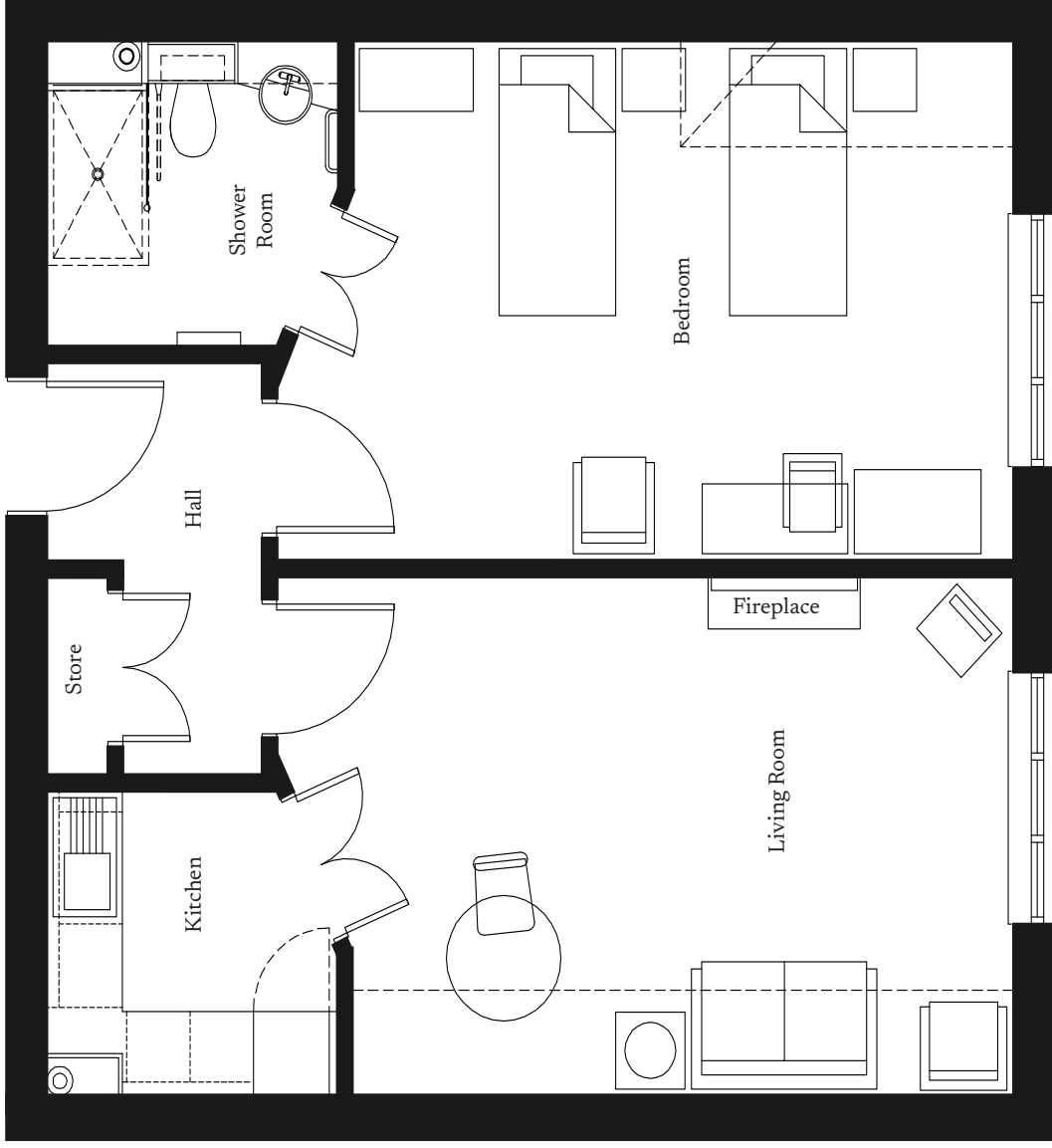
01235 773970

letcomberegis@richmond-villages.com

Richmond Villages Letcombe Regis,  
South Street, Letcombe Regis, Oxfordshire OX12 9RG

# Apartment 46

Second Floor | 57.37m<sup>2</sup> – 617.52ft<sup>2</sup>



- Kitchen**  
2300mm x 2180mm  
7'7" x 7'2"
- Sitting Room**  
5800mm x 3710mm  
19'1" x 12'2"
- Bedroom**  
5800mm x 3710mm  
19'1" x 12'2"
- Shower Room**  
2300mm x 2180mm  
7'7" x 7'2"

These particulars are intended to give a fair and substantially correct overall description.

Measurements have been taken at 1500mm ceiling height.

All dimensions are approximate. Bedroom measurements include the wardrobe; if applicable. Room measurements include bay windows if applicable.

Furniture layout is to give an indicative impression. Although all efforts have been made to ensure its accuracy at time of print dimensions, fixtures, fittings, finishes and specifications are subject to change without notice.

The properties are sold unfurnished.

