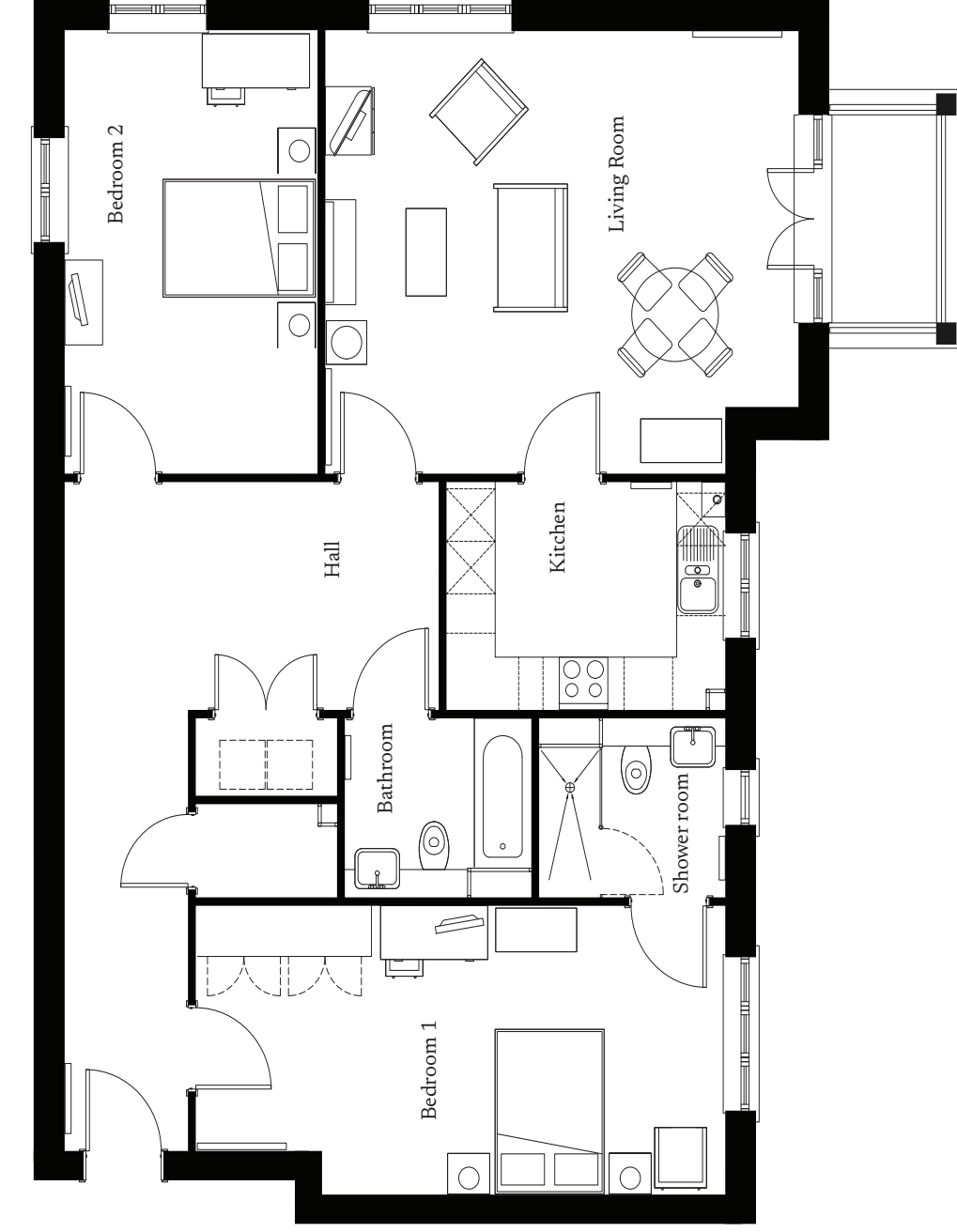


# 5 Milestones Close

First Floor | 110.6m<sup>2</sup> – 1191ft<sup>2</sup>



## Kitchen

3440mm x 2600mm

11'3" x 8'5"

## Sitting Room

5836mm x 5062mm

19'1" x 16'6"

## Bedroom 1

6526mm x 3300mm

21'4" x 10'8"

## Wet Room

2300mm x 2050mm

7'5" x 6'7"

## Bedroom 2

5062mm x 3118mm

16'6" x 10'2"

## Bathroom

2300mm x 2050mm

7'5" x 6'7"

These particulars are intended to give a fair and substantially correct overall description.

Measurements have been taken at 1500mm ceiling height.

All dimensions are approximate. Bedroom measurements include the wardrobe if applicable. Room measurements include bay windows if applicable.

Furniture layout is to give an indicative impression. Although all efforts have been made to ensure its accuracy at time of print dimensions, fixtures, fittings, finishes and specifications are subject to change without notice.

The properties are sold unfurnished.

