

# 33 Village Centre

Second Floor | 73.19m<sup>2</sup> – 787.81ft<sup>2</sup>

**Kitchen**  
2300mm x 2180mm  
7'7" x 7'2"

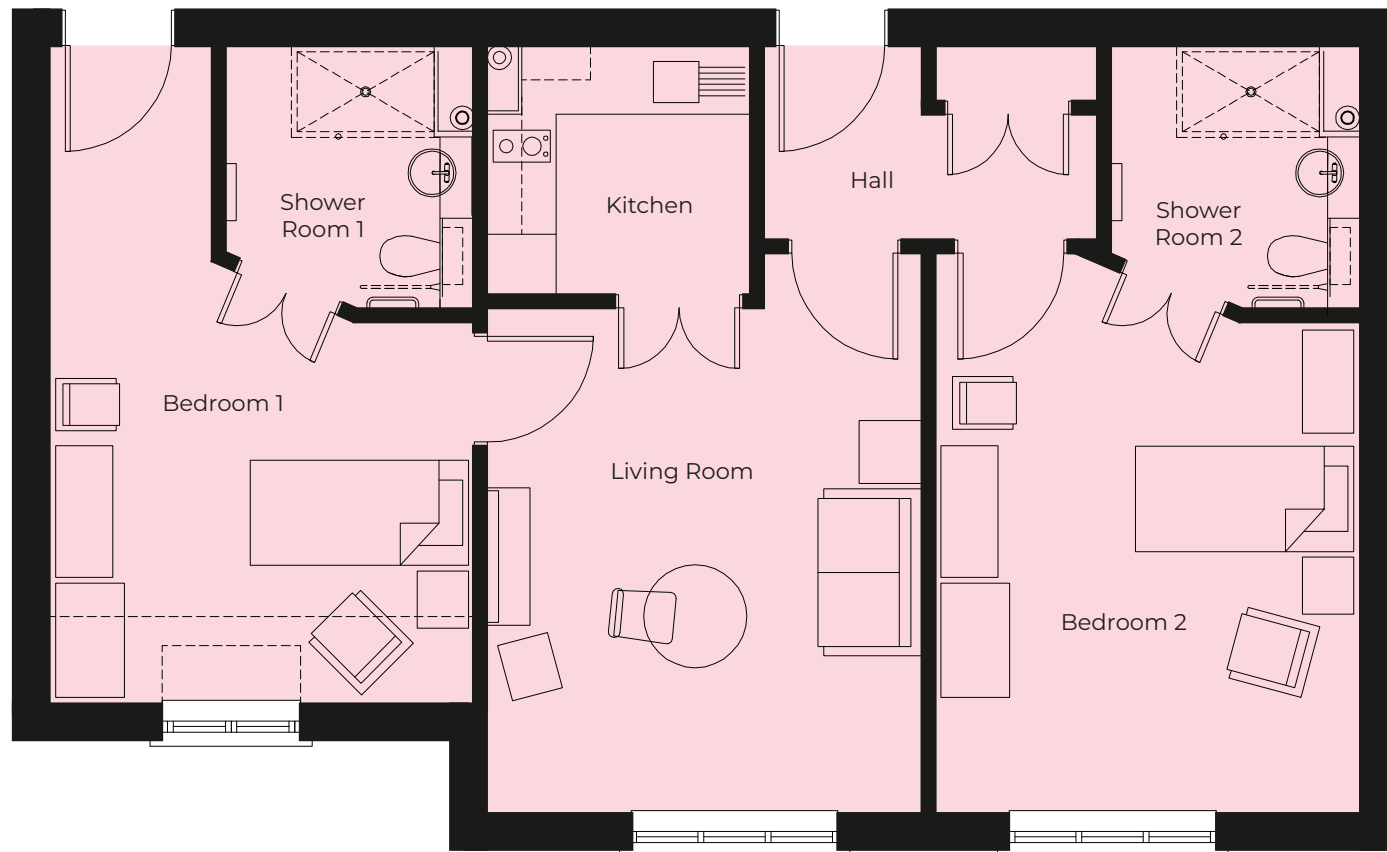
**Living Room**  
4900mm x 3800mm  
16'1" x 12'6"

**Bedroom 1**  
5750mm x 3710mm  
18'10" x 12'2"

**Shower Room 1**  
2300mm x 2180mm  
7'7" x 7'2"

**Bedroom 2**  
4900mm x 3710mm  
16'1" x 12'2"

**Shower Room 2**  
2300mm x 2180mm  
7'7" x 7'2"



These particulars are intended to give a fair and substantially correct overall description.

Measurements have been taken at 1500mm skelling height.

All dimensions are approximate. Bedroom measurements include the wardrobe if applicable. Room measurements include bay windows if applicable.

Furniture layout is to give an indicative impression. Although all efforts have been made to ensure its accuracy at time of print dimensions, fixtures, fittings, finishes and specifications are subject to change without notice.

The properties are sold unfurnished.

