

15 Ashfields Grove

Second Floor | 77.8m² – 837ft²

Kitchen

3780mm x 2995mm

12'5" x 7'6"

Living Room

5722mm x 5388mm

18'9" x 17'8"

Bedroom

5800mm x 3300mm

19' x 10'10"

Dressing Room

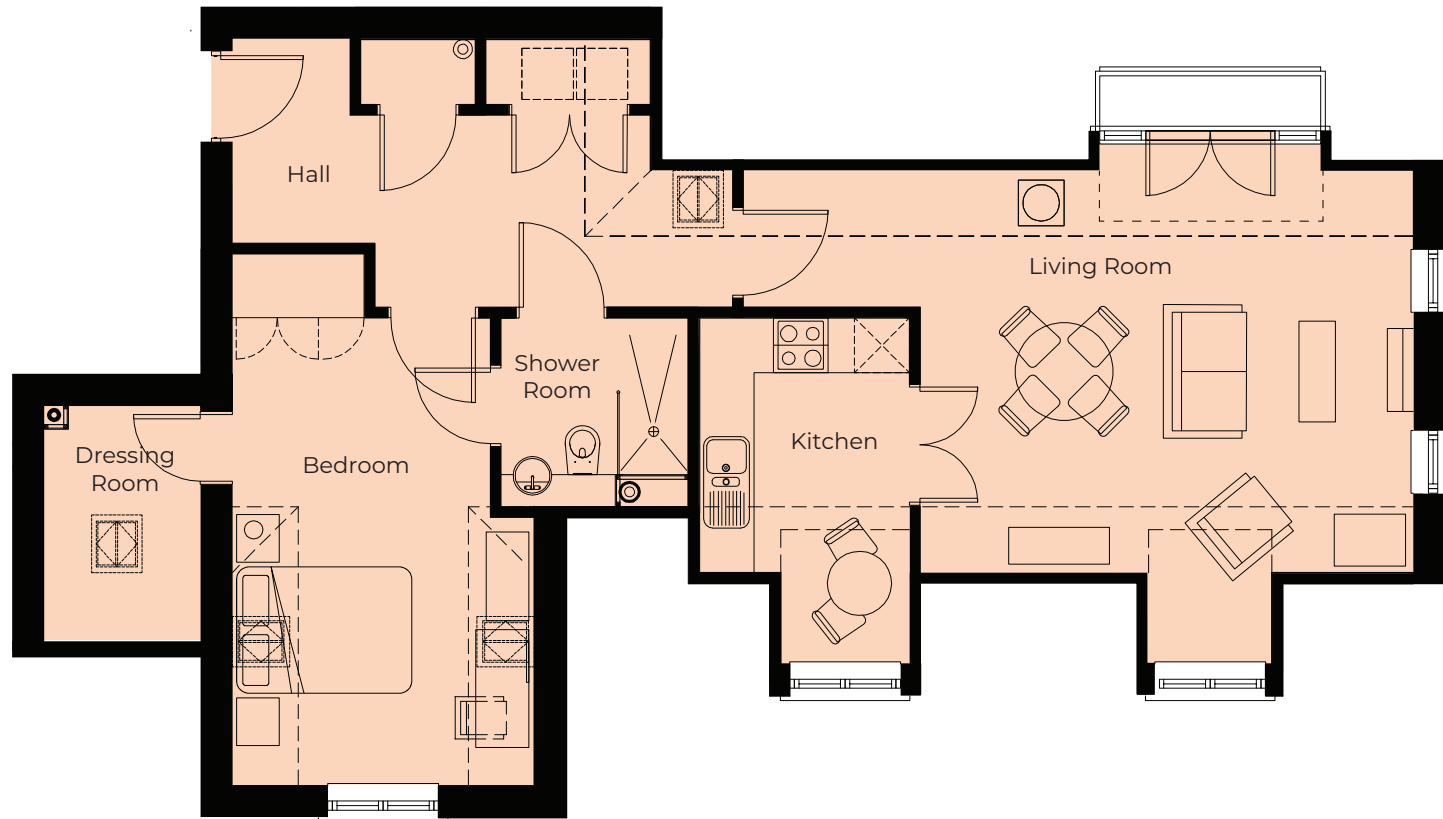
1900mm x 1700mm

6'2" x 5'7"

Shower Room

2063mm x 2047mm

6'9" x 6'9"



These particulars are intended to give a fair and substantially correct overall description.

Measurements have been taken at 1500mm skelling height.

All dimensions are approximate. Bedroom measurements include the wardrobe if applicable. Room measurements include bay windows if applicable.

Furniture layout is to give an indicative impression. Although all efforts have been made to ensure its accuracy at time of print dimensions, fixtures, fittings, finishes and specifications are subject to change without notice.

The properties are sold unfurnished.

