

# Village Suite 31

Floor 3 | 42.01m<sup>2</sup> – 452.19ft<sup>2</sup>

## Kitchen

2300mm x 2130mm  
7'7" x 7'

## Sitting Room

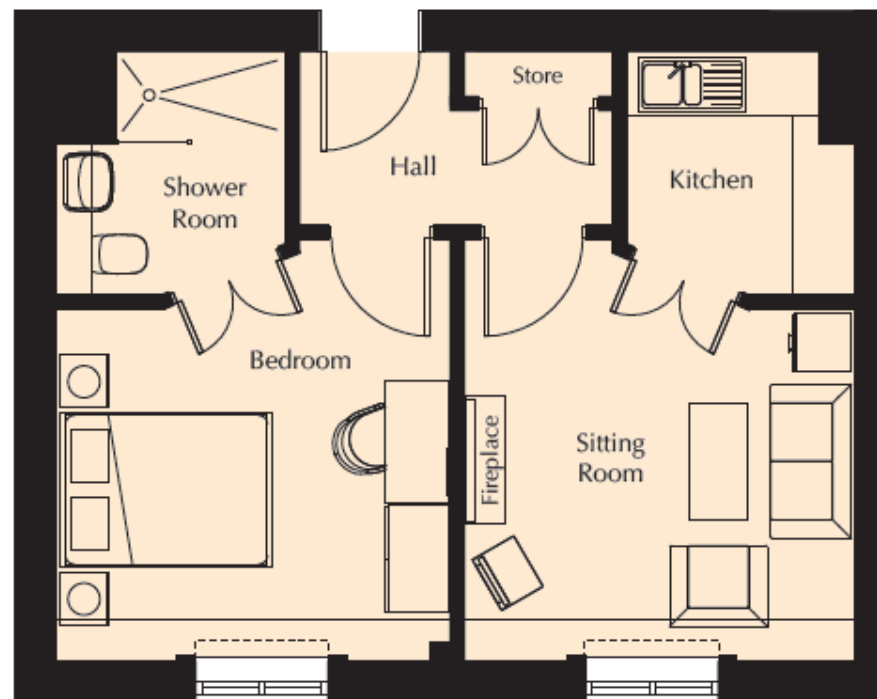
3947mm x 3717mm  
12'11" x 12'2"

## Bedroom

3682mm x 3316mm  
12'1" x 10'11"

## Shower Room

2300mm x 2180mm  
7'7" x 7'2"



These particulars are intended to give a fair and substantially correct overall description.

Measurements have been taken at 1500mm skirting height.

All dimensions are approximate. Room measurements include bay windows if applicable.

Furniture layout is to give an indicative impression and although all efforts have been made to ensure its accuracy at time of print; fixtures, fittings, finishes and specifications are subject to change without notice.

