

The Avenue 30

Floor 4 | 115.91m² – 1247.64ft²

Kitchen

3319mm x 2935mm
10'11" x 9'8"

Sitting Room

6948mm x 4988mm
22'10" x 16'4"

Bedroom 1

6886mm x 4920mm
22'7" x 16'2"

Shower Room

2300mm x 2180mm
7'7" x 7'2"

Bedroom 2

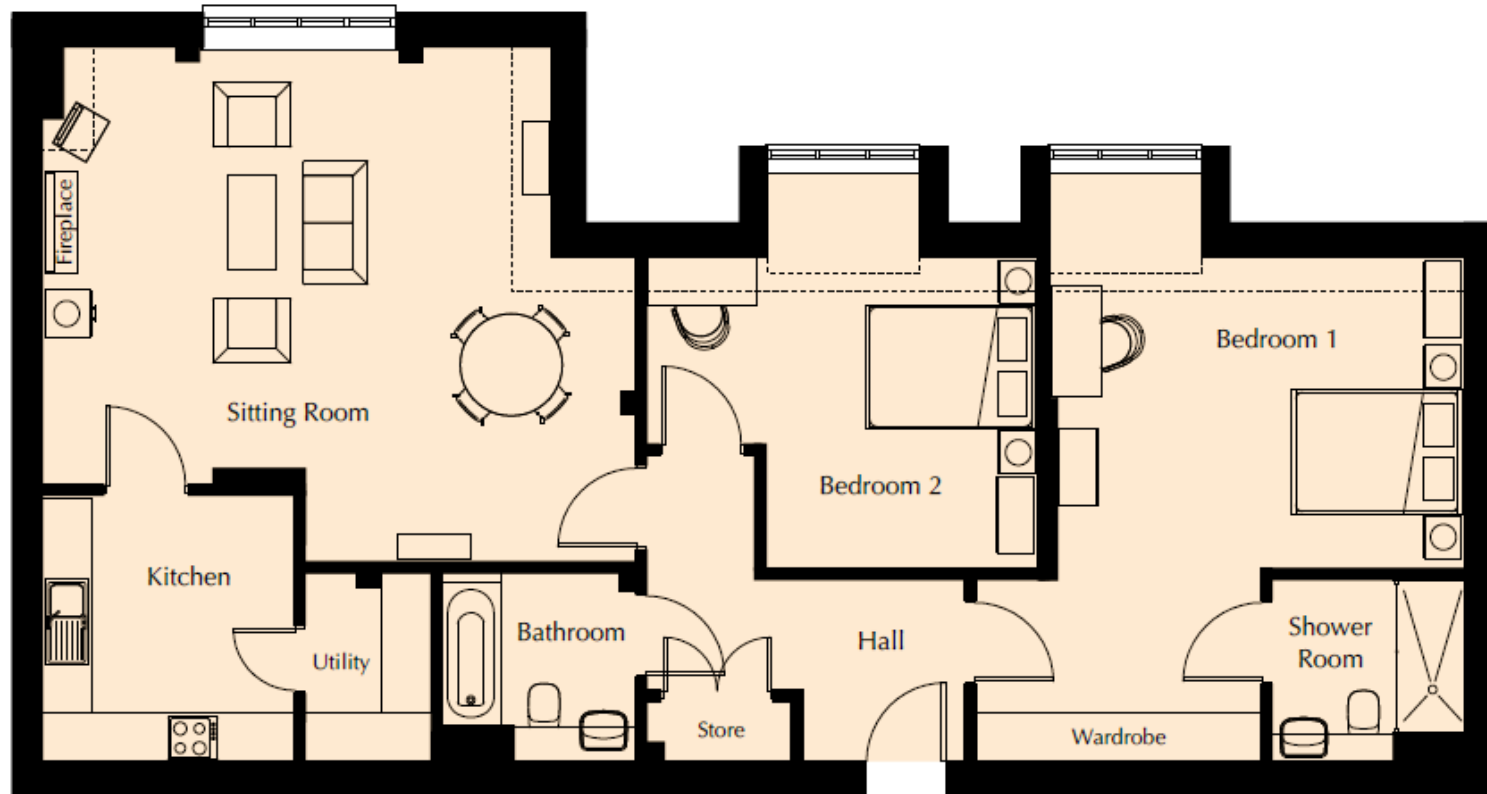
4595mm x 4559mm
15'1" x 14'11"

Bathroom

2300mm x 2180mm
7'7" x 7'2"

Utility

2259mm x 1509mm
7'5" x 4'11"



These particulars are intended to give a fair and substantially correct overall description.

Measurements have been taken at 1500mm skieiling height.

All dimensions are approximate. Bedroom measurements include the wardrobe if applicable. Room measurements include bay windows if applicable.

Furniture layout is to give an indicative impression. Although all efforts have been made to ensure its accuracy at time of print dimensions, fixtures, fittings, finishes and specifications are subject to change without notice.

