

# Apartment 4

Ground floor | 58.87m<sup>2</sup> – 634ft<sup>2</sup>

## Kitchenette

2500mm x 2120mm  
8'2" x 6'11"

## Living Room

6240mm x 3620mm  
20'5" x 11'10"

## Bedroom

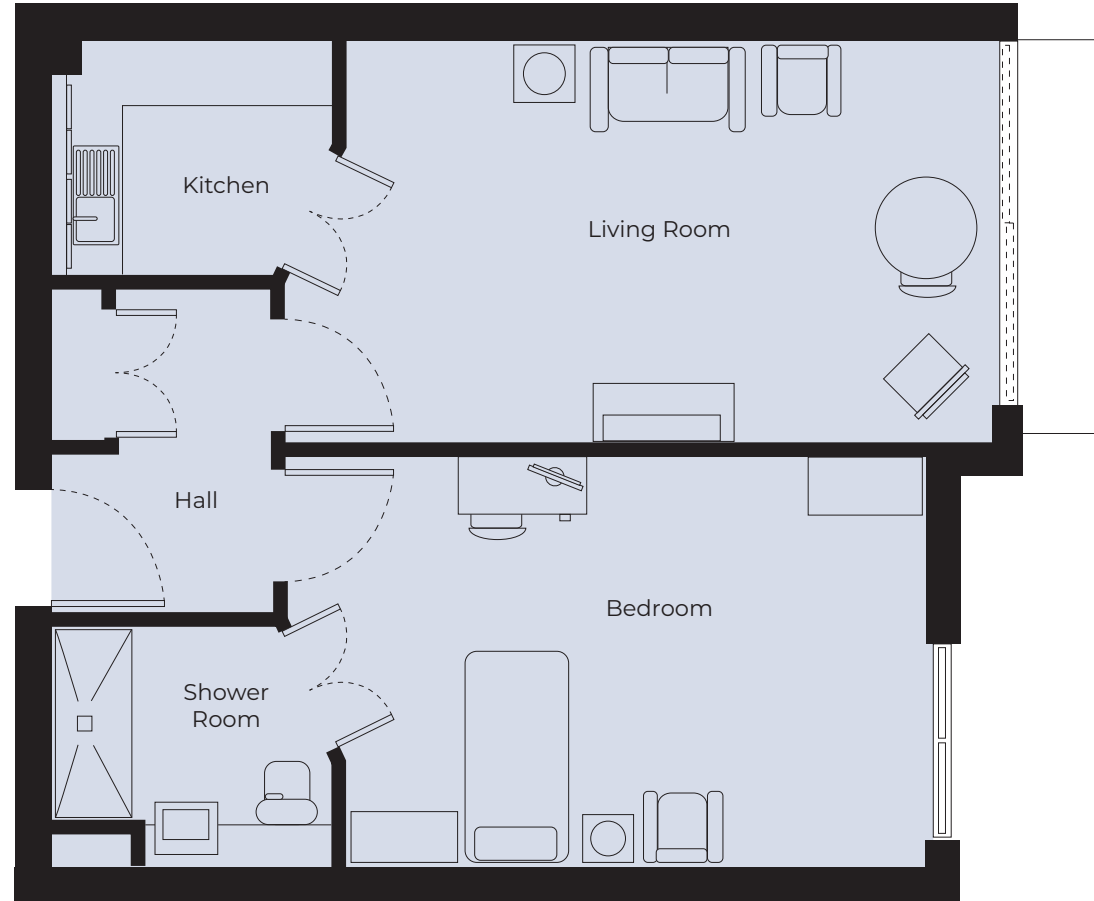
5080mm x 3630mm  
17'8" x 11'11"

## Shower Room

2500mm x 2120mm  
8'2" x 6'11"

## Patio Area

3500mm x 2500mm  
11'5" x 8'2"



These particulars are intended to give a fair and substantially correct overall description.

Measurements have been taken at 1500mm skelling height.

All dimensions are approximate. Bedroom measurements include the wardrobe if applicable. Room measurements include bay windows if applicable.

Furniture layout is to give an indicative impression. Although all efforts have been made to ensure its accuracy at time of print dimensions, fixtures, fittings, finishes and specifications are subject to change without notice.

The properties are sold unfurnished.

