

46 Marlow

Second Floor

Kitchen

4419mm x 2437mm
14'5" x 7'10"

Living Room

6187mm x 4023mm
20'3" x 13'2"

Bedroom 1

4907mm x 3352mm
16'1" x 11'

Bathroom

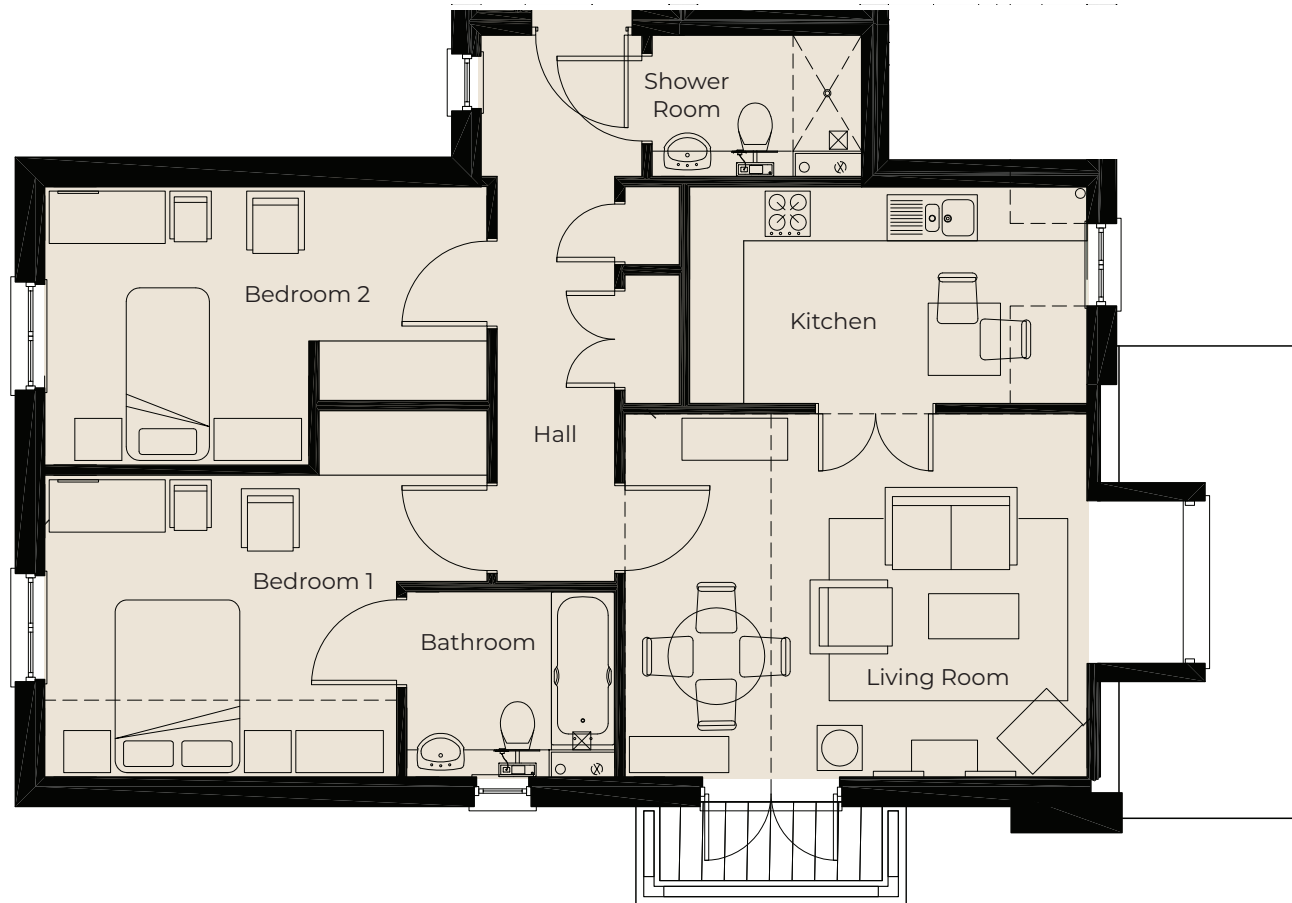
2346mm x 2103mm
7'7" x 6'9"

Bedroom 2

4907mm x 3078mm
16'1" x 10'1"

Shower Room

2346mm x 1584mm
7'7" x 5'2"



These particulars are intended to give a fair and substantially correct overall description.

Measurements have been taken at 1500mm skeliling height.

All dimensions are approximate. Bedroom measurements include the wardrobe if applicable. Room measurements include bay windows if applicable.

Furniture layout is to give an indicative impression. Although all efforts have been made to ensure its accuracy at time of print dimensions, fixtures, fittings, finishes and specifications are subject to change without notice.

The properties are sold unfurnished.

