

# Village Suite 1

Ground floor | 45.66m<sup>2</sup> – 491ft<sup>2</sup>

## Kitchenette

2500mm x 2120mm  
8'2" x 6'11"

## Sitting Room

4480mm x 3630mm  
14'8" x 11'11"

## Bedroom

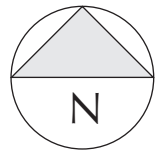
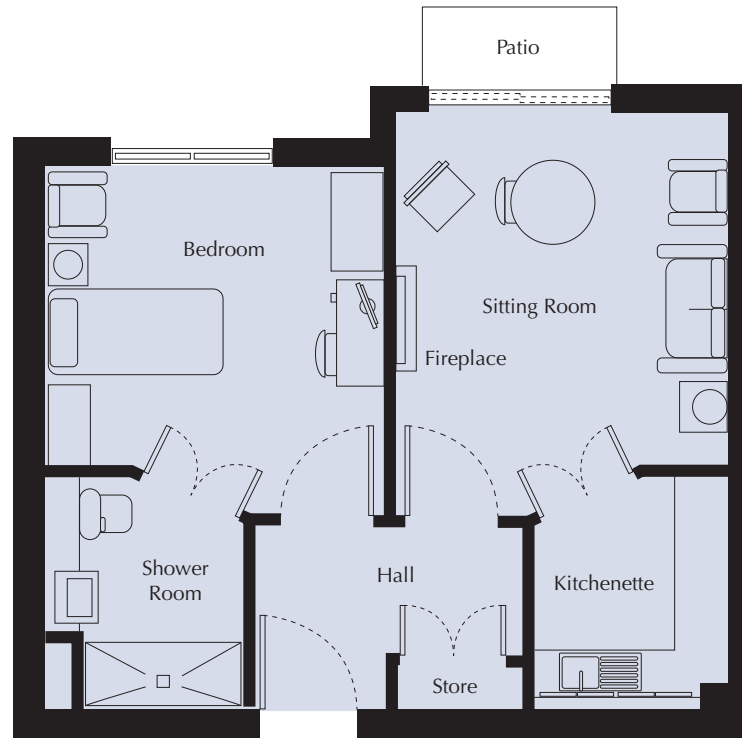
3940mm x 3610mm  
12'11" x 11'10"

## Shower Room

2500mm x 2120mm  
8'2" x 6'11"

## Patio Area

3500mm x 2500mm  
11'5" x 8'2"



These particulars are intended to give a fair and substantially correct overall description.

All dimensions are approximate and indicate main area of room only.

Furniture layout is to give an indicative impression and although all efforts have been made to ensure its accuracy at time of print; fixtures, fittings, finishes and specifications are subject to change without notice.

All properties are sold unfurnished.