

13 Brook View

Ground Floor | 118m² (1270ft²)

Kitchen

3671mm x 4252mm
12'1" x 13'11"

Living Room

7097mm x 4831mm
23'3" x 15'10"

Bedroom 1

4062mm x 5298mm
13'4" x 17'5"

Shower Room

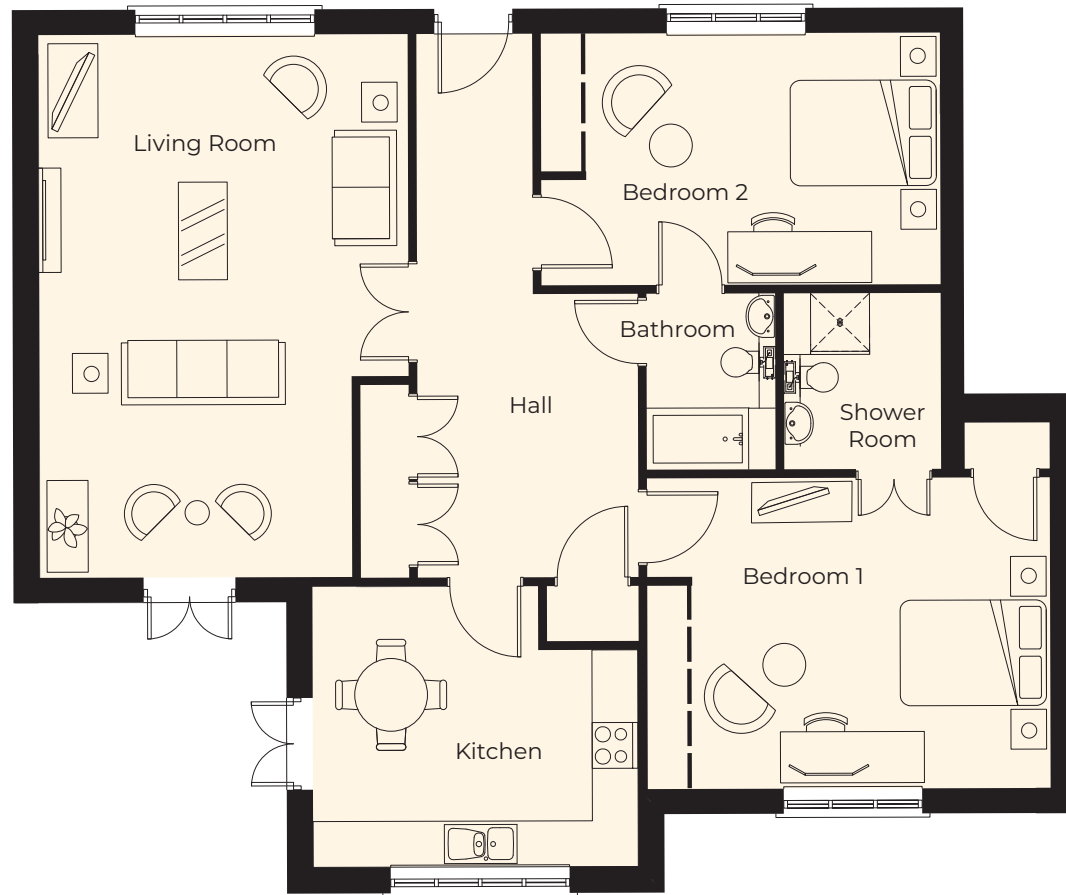
2300mm x 1681mm
7'7" x 5'6"

Bedroom 2

3290mm x 4618mm
10'10" x 15'2"

Bathroom

2300mm x 2050mm
7'7" x 6'9"



These particulars are intended to give a fair and substantially correct overall description.

Measurements have been taken at 1500mm skeliling height.

All dimensions are approximate. Bedroom measurements include the wardrobe if applicable. Room measurements include bay windows if applicable.

Furniture layout is to give an indicative impression. Although all efforts have been made to ensure its accuracy at time of print dimensions, fixtures, fittings, finishes and specifications are subject to change without notice.

The properties are sold unfurnished.

