

# Tuckers Court 49

Ground Floor | 89.62m<sup>2</sup> – 964.7ft<sup>2</sup>

## Kitchen

3648mm x 3000mm  
12' x 9'10"

## Sitting Room

6001mm x 4680mm (into bay)  
19'8" x 15'4"

## Bedroom 1

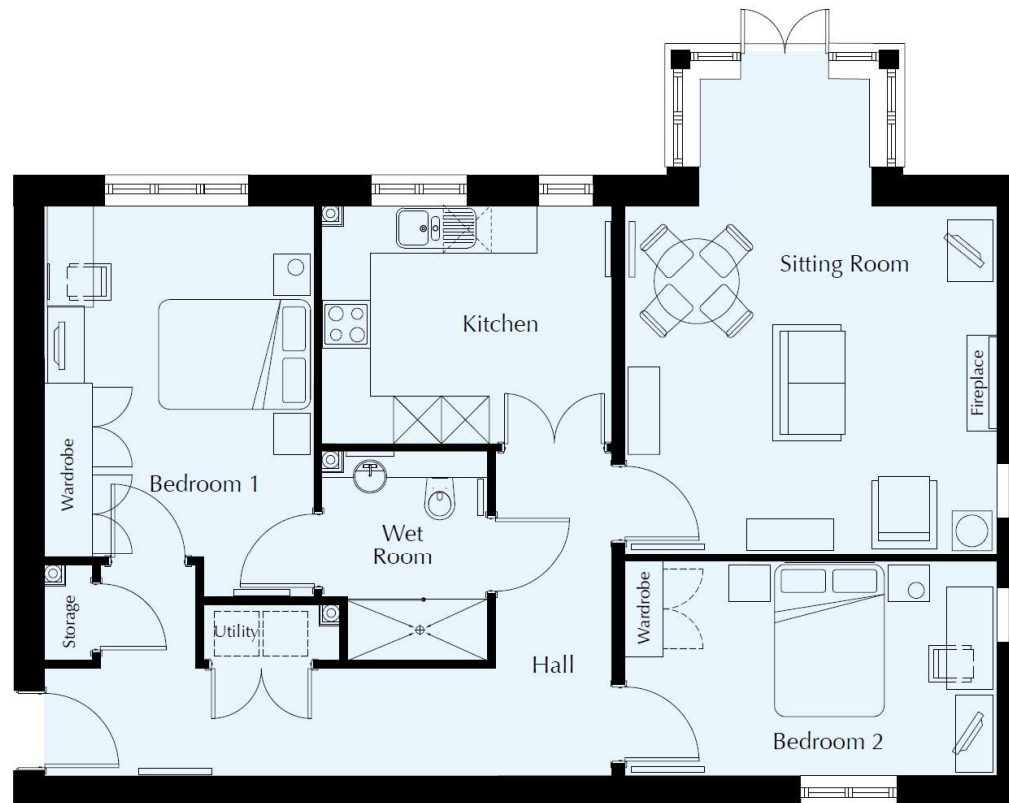
4440mm x 3390mm  
14'7" x 11'1"

## Shower Room

2640mm x 2078mm  
8'8" x 6'10"

## Bedroom 2

4680mm x 2700mm  
15'4" x 8'10"



These particulars are intended to give a fair and substantially correct overall description. All dimensions are approximate. Internal layouts are indicative and subject to change.

