

34 The Avenue

Floor 1 | 69.79m² – 750.89ft²

Kitchen

3385mm x 2600mm

11'1" x 8'6"

Living Room

7165mm x 4631mm

23'6" x 15'2"

Bedroom

4664mm x 4194mm

15'4" x 13'9"

Shower Room

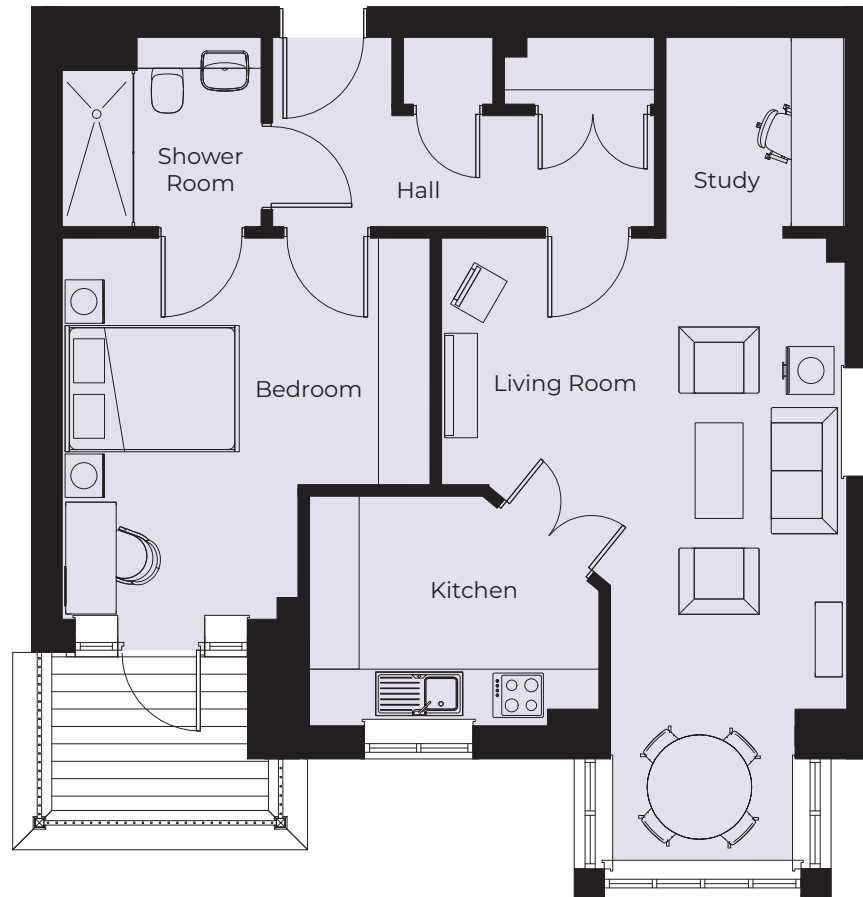
2300mm x 2180mm

7'7" x 7'2"

Study

2180mm x 2056mm

7'2" x 6'9"



These particulars are intended to give a fair and substantially correct overall description.

Measurements have been taken at 1500mm skelling height.

All dimensions are approximate. Bedroom measurements include the wardrobe if applicable. Room measurements include bay windows if applicable.

Furniture layout is to give an indicative impression. Although all efforts have been made to ensure its accuracy at time of print dimensions, fixtures, fittings, finishes and specifications are subject to change without notice.

The properties are sold unfurnished.

