

# Cultural World Festival

Join in the fun at **Richmond Letcombe Regis!**

*In aid of the Wantage Independent Advice Centre*



**SATURDAY 11<sup>TH</sup> & SUNDAY 12<sup>TH</sup> JULY**

**Cultural World Festival | FREE**

Saturday 12 noon - 6pm

Sunday 10am - 2pm

**Grand Raffle**

- **Taiko Japanese Drummers** open the festival
- Vocalist **Truly Ford**
- Pianist **Ester Ng** with music from Singapore
- Around the world themed stalls
- Food stalls including Indian and Thai cuisine from **Snooty Mehmman**
- **Bar de Cru** will be providing cocktails, mocktails, wine and beer
- Creperie and a vintage ice-cream van
- Art exhibition and workshops including sculpture by **Beatrice Hoffman**.
- International Beauty Therapies
- Elvis, Belly dancers, Jazz, Ukuleles, plus many more acts!



**SATURDAY 11<sup>TH</sup> JULY**

**Camille Maalawy | £10**

8pm - 9pm

St Andrew's Church, Letcombe Regis

Camille Maalawy, Mezzo Soprano accompanied by Andrew Robinson from the Royal College of Music. An evening of music and culture that showcases Camille's wonderful vocal talent.

Join us for cheese and wine in The Lodge Café  
7pm - 7.45pm

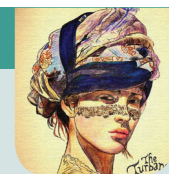


**SUNDAY 12<sup>TH</sup> JULY**

**The Turbans | £10**

3pm - 4pm, The Lodge Café

An International band bringing together Eastern and European compositions from countries such as Turkey, Bulgaria, Israel, Iran, Italy, Greece, and England.  
Join us for cream tea 2.15pm - 3pm



**VILLAGE OPEN DAY - SATURDAY 11<sup>TH</sup> JULY | 10am - 3pm**

The chance to look around the award-winning retirement village, view the available apartments and speak to our village advisers.

For more information or to purchase tickets call 01235 774579

Tickets can also be purchased at the Vale and Downland Museum, Wantage 01235 760176

[www.richmond-villages.com/letcombe](http://www.richmond-villages.com/letcombe)

Richmond Letcombe Regis, South Street, Letcombe Regis, Oxfordshire OX12 9RG



**RICHMOND  
LETCOMBE REGIS**

*Part of Bupa*