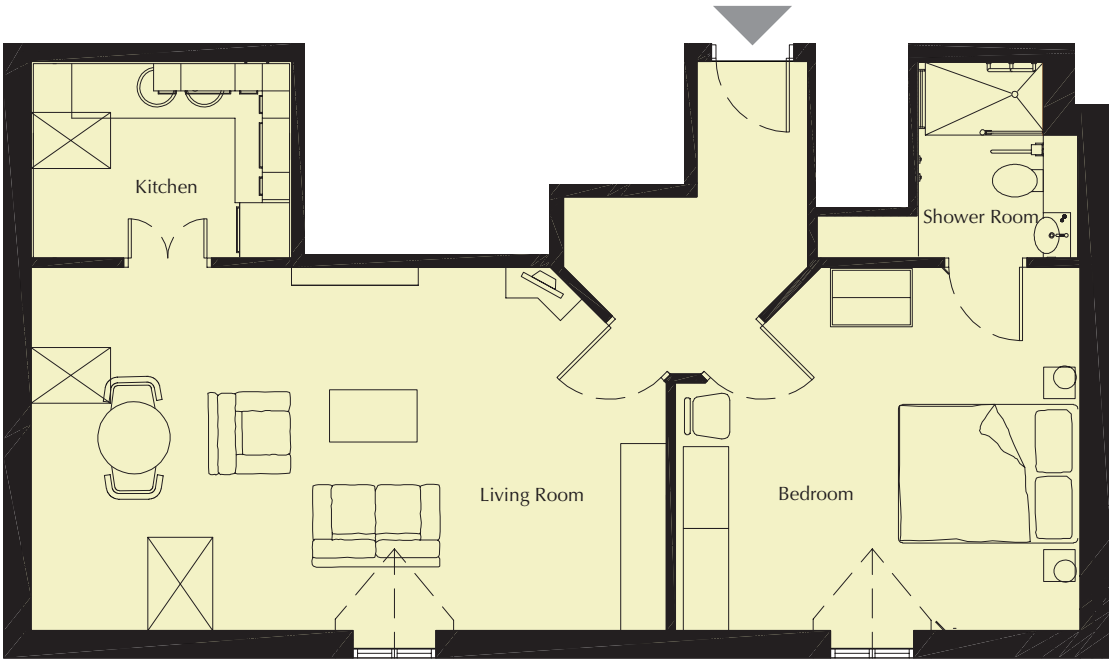


# Romney Suite

## Floor Plan

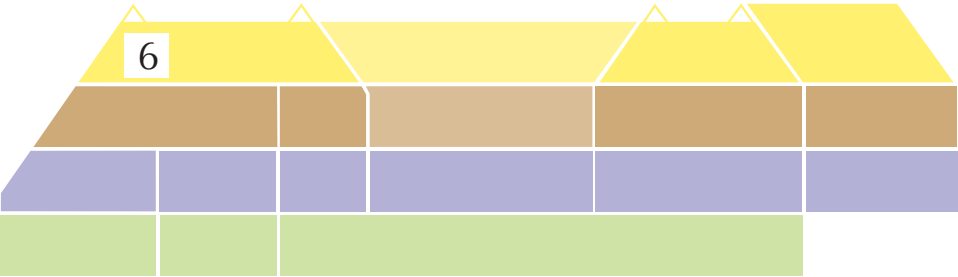


A superb, spacious suite located on the meadow deck level comprising an entrance hall, large living/dining area with kitchenette and a double bedroom with en-suite facilities.

### Internal measurements (max)

	Metric	Imperial
Living room	6974 x 3951mm	22'10" x 12'11"
Kitchen	2823 x 2143mm	9'3" x 7'
Bedroom	4436 x 3976mm	14'6" x 13'
Shower room	1750 x 2143mm	5'9" x 7'

## Level Key



### Key to village levels

Meadow Deck
Courtyard
Mezzanine
Lower Garden

Suite type S. All layouts/dimensions are for illustrative purposes only.