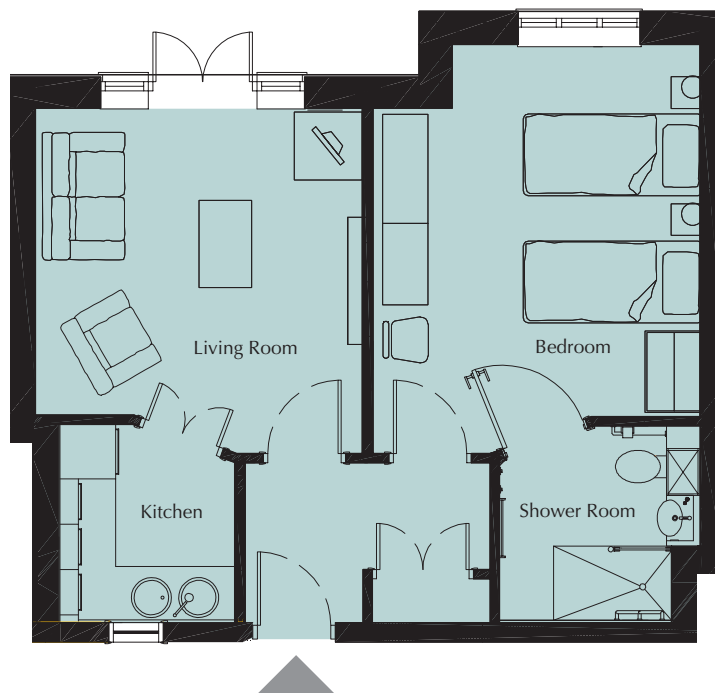


# Maidenhead Suite

## Floor Plan

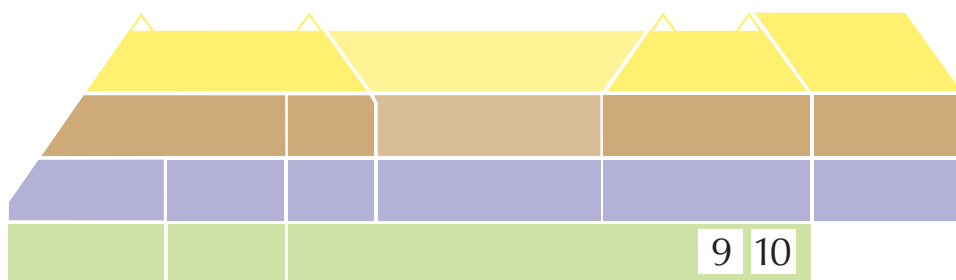


A choice of two Maidenhead suites are available, situated on the lower garden level. They comprise an entrance hall, living room with kitchenette and casement doors leading to a patio, and bedroom with en-suite facilities.

### Internal measurements (max)

	Metric	Imperial
Living room	3601 x 3781mm	11'9" x 12'4"
Kitchen	1939 x 2182mm	6'4" x 7'2"
Bedroom	3601 x 4075mm	11'9" x 13'4"
Shower room	2215 x 2142mm	7'3" x 7'

## Level Key



### Key to village levels

Meadow Deck
Courtyard
Mezzanine
Lower Garden